
Product Datasheet

SIRT2 Antibody (orb1238964)

Description

SIRT2 Antibody

Species/Host

Rabbit

Reactivity

Human, Mouse, Rat

Conjugation

Unconjugated

Tested Applications

ELISA, IF, IHC-P, WB

Immunogen

SIRT2 antibody was raised against a 17 amino acid synthetic peptide near the amino terminus of the human SIRT2. The immunogen is located within the first 50 amino acids of SIRT2.

Target

SIRT2

Preservatives

SIRT2 Antibody is supplied in PBS containing 0.02% sodium azide.

Form/Appearance

Liquid

Concentration

1 mg/mL

Storage

SIRT2 antibody can be stored at 4°C for three months and -20°C, stable for up to one year. As with all antibodies care should be taken to avoid repeated freeze thaw cycles. Antibodies should not be exposed to prolonged high temperatures.

Note

For research use only

Application notes

SIRT2 antibody can be used for detection of SIRT2 by Western blot at 2.5 - 5 µg/mL. Antibody can also be used for immunohistochemistry starting at 2.5 µg/mL. For immunofluorescence start at 20 µg/mL. Antibody validated: Western Blot in human samples; Immunohistochemistry in human samples and Immunofluorescence in human samples. All other applications and species not yet tested.

Isotype

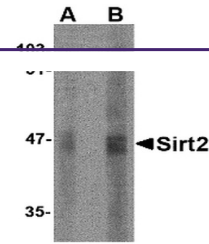
IgG

Clonality

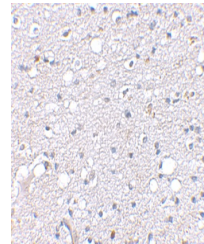
Polyclonal

Uniprot ID
[Q8IXJ6](#)
NCBI
[NP_036369](#)
Dilution Range

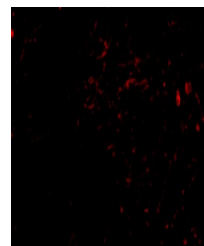
SIRT2 antibody can be used for detection of SIRT2 by Western blot at 2.5 - 5 µg/mL. Antibody can also be used for immunohistochemistry starting at 2.5 µg/mL. For immunofluorescence start at 20 µg/mL. Antibody validated: Western Blot in human samples; Immunohistochemistry in human samples and



Western blot analysis of SIRT2 in human ...



Immunohistochemical staining of human br...



Immunofluorescence of sirt2 in human bra...