
Product Datasheet

SIVA1 Antibody (orb1238963)

Description

SIVA1 Antibody

Species/Host

Gallus

Reactivity

Human, Mouse

Conjugation

Unconjugated

Tested Applications

ELISA, IF, WB

Immunogen

SIVA antibody was raised against a 16 amino acid synthetic peptide near the amino terminus of human SIVA. The immunogen is located within the first 50 amino acids of SIVA.

Target

SIVA1

Preservatives

SIVA Antibody is supplied in PBS containing 0.02% sodium azide.

Form/Appearance

Liquid

Concentration

1 mg/mL

Storage

SIVA antibody can be stored at 4°C for three months and -20°C, stable for up to one year. As with all antibodies care should be taken to avoid repeated freeze thaw cycles. Antibodies should not be exposed to prolonged high temperatures.

Note

For research use only

Application notes

SIVA antibody can be used for detection of EPAC1 by Western blot at 1 µg/mL. Antibody can also be used for immunofluorescence starting at 20 µg/mL. For immunofluorescence start at 20 µg/mL. Antibody validated: Western Blot in mouse samples and Immunofluorescence in mouse samples. All other applications and species not yet tested.

Isotype

IgY

Clonality

Polyclonal

Uniprot ID
[O15304](#)
NCBI
[NP_068355](#)
Dilution Range

SIVA antibody can be used for detection of EPAC1 by Western blot at 1 µg/mL. Antibody can also be used for immunofluorescence starting at 20 µg/mL. For immunofluorescence start at 20 µg/mL. Antibody validated: Western Blot in mouse samples and Immunofluorescence in mouse samples. All other applications and species not yet tested.

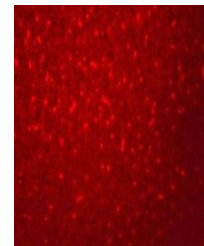


32-

14-

7-

Western blot analysis of SIVA in mouse l...



Immunofluorescence of SIVA in mouse live...