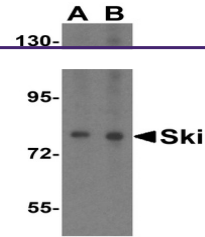
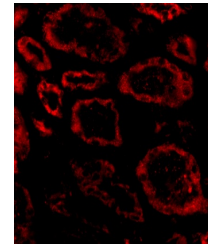

Product Datasheet

SKI Antibody (orb1238961)

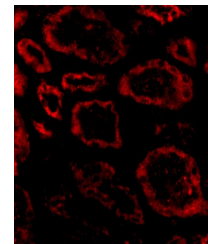
Description	SKI Antibody
Species/Host	Rabbit
Reactivity	Human
Conjugation	Unconjugated
Tested Applications	ELISA, IF, WB
Immunogen	Ski antibody was raised against a 14 amino acid synthetic peptide from near the amino terminus of human Ski. The immunogen is located within the first 50 amino acids of Ski.
Target	SKI
Preservatives	Ski Antibody is supplied in PBS containing 0.02% sodium azide.
Form/Appearance	Liquid
Concentration	1 mg/ml
Storage	Ski antibody can be stored at 4°C for three months and -20°C, stable for up to one year. As with all antibodies care should be taken to avoid repeated freeze thaw cycles. Antibodies should not be exposed to prolonged high temperatures.
Note	For research use only
Application notes	SkiP antibody can be used for detection of Ski by Western blot at 1 - 2 µg/mL. Antibody can also be used for immunohistochemistry starting at 20 µg/mL. For immunofluorescence start at 20 µg/mL. Antibody validated: Western Blot in human samples and Immunofluorescence in human samples. All other applications and species not yet tested.
Isotype	IgG
Clonality	Polyclonal
Uniprot ID	P12755
NCBI	P12755
Dilution Range	SkiP antibody can be used for detection of Ski by Western blot at 1 - 2 µg/mL. Antibody can also be used for immunohistochemistry starting at 20 µg/mL. For immunofluorescence start at 20 µg/mL. Antibody validated: Western Blot in human samples and Immunofluorescence in human samples. All other applications and species not yet tested.



Western blot analysis of Ski in HeLa cel...



Immunofluorescence of Ski in human kidney...



Immunofluorescence of Ski in Human Kidne...