
Product Datasheet

SLAMF9 Antibody (orb1238955)

Description

SLAMF9 Antibody

Species/Host

Rabbit

Reactivity

Human, Mouse, Rat

Conjugation

Unconjugated

Tested Applications

ELISA, IF, IHC-P, WB

Immunogen

SLAMF9 antibody was raised against a 19 amino acid synthetic peptide near the carboxy terminus of human SLAMF9. The immunogen is located within the last 50 amino acids of SLAMF9.

Target

SLAMF9

Preservatives

SLAMF9 Antibody is supplied in PBS containing 0.02% sodium azide.

Form/Appearance

Liquid

Concentration

1 mg/mL

Storage

SLAMF9 antibody can be stored at 4°C for three months and -20°C, stable for up to one year. As with all antibodies care should be taken to avoid repeated freeze thaw cycles. Antibodies should not be exposed to prolonged high temperatures.

Note

For research use only

Application notes

SLAMF9 antibody can be used for detection of SLAMF9 by Western blot at 1 - 2 µg/mL. Antibody can also be used for immunohistochemistry starting at 2.5 µg/mL. For immunofluorescence start at 20 µg/mL. Antibody validated: Western Blot in mouse samples; Immunohistochemistry in human samples and Immunofluorescence in human samples. All other applications and species not yet tested.

Isotype

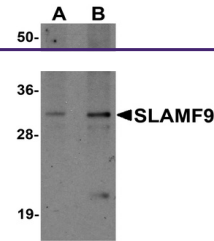
IgG

Clonality

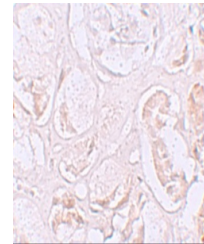
Polyclonal

Uniprot ID
[Q96A28](#)
NCBI
[NP_001139645](#)
Dilution Range

SLAMF9 antibody can be used for detection of SLAMF9 by Western blot at 1 - 2 µg/mL. Antibody can also be used for immunohistochemistry starting at 2.5 µg/mL. For immunofluorescence start at 20 µg/mL. Antibody validated: Western Blot in mouse samples; Immunohistochemistry in human samples

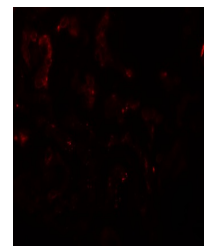


Western blot analysis of SLAMF9 in mouse...



Immunohistochemistry of SLAMF9 in human

...



Immunofluorescence of SLAMF9 in human kidney...