
Product Datasheet

SLC27A6 Antibody (orb1238952)

Description

SLC27A6 Antibody

Species/Host

Rabbit

Reactivity

Human, Mouse, Rat

Conjugation

Unconjugated

Tested Applications

ELISA, IF, IHC, WB

Immunogen

SLC27A6 antibody was raised against a 16 amino acid peptide near the amino terminus of human SLC27A6. The immunogen is located within amino acids 180 - 230 of SLC27A6.

Target

SLC27A6

Preservatives

SLC27A6 Antibody is supplied in PBS containing 0.02% sodium azide.

Form/Appearance

Liquid

Concentration

1 mg/mL

Storage

SLC27A6 antibody can be stored at 4°C for three months and -20°C, stable for up to one year.

Note

For research use only

Application notes

SLC27A6 antibody can be used for detection of SLC27A6 by Western blot at 1 - 2 µg/mL. Antibody can also be used for Immunohistochemistry starting at 5 µg/mL. For immunofluorescence start at 20 µg/mL. Antibody validated: Western Blot in mouse samples; Immunocytochemistry in rat samples and Immunofluorescence in rat samples. All other applications and species not yet tested.

Isotype

IgG

Clonality

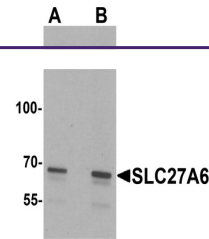
Polyclonal

MW

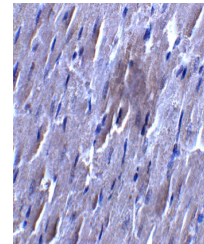
Predicted: 68 kDa Observed: 68 kDa

Uniprot ID
[Q9Y2P4](#)
NCBI
[NP_054750](#)
Dilution Range

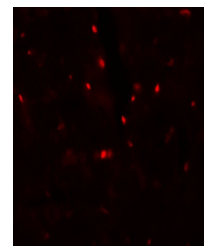
SLC27A6 antibody can be used for detection of SLC27A6 by Western blot at 1 - 2 µg/mL. Antibody can also be used for Immunohistochemistry starting at 5 µg/mL. For immunofluorescence start at 20 µg/mL. Antibody validated: Western Blot in mouse samples; Immunocytochemistry in rat samples and Immunofluorescence in rat samples. All other applications and species not yet tested.



Western blot analysis of SLC27A6 in A20 ...



Immunocytochemistry of SLC27A6 in rat he...



Immunofluorescence of SLC27A6 in rat hea...