
Product Datasheet

SLC29A2 Antibody (orb1238950)

Description

SLC29A2 Antibody

Species/Host

Rabbit

Reactivity

Human

Conjugation

Unconjugated

Tested Applications

ELISA, IF, IHC-P, WB

Immunogen

SLC29A2 antibody was raised against a 19 amino acid peptide near the center of human SLC29A2. The immunogen is located within amino acids 250 - 300 of SLC29A2.

Target

SLC29A2

Preservatives

SLC29A2 antibody is supplied in PBS containing 0.02% sodium azide.

Form/Appearance

Liquid

Concentration

1 mg/mL

Storage

SLC29A2 antibody can be stored at 4°C for three months and -20°C, stable for up to one year.

Note

For research use only

Application notes

SLC29A2 antibody can be used for detection of SLC29A2 by Western blot at 1 - 2 µg/ml. Antibody can also be used for immunohistochemistry starting at 2.5 µg/mL. For immunofluorescence start at 20 µg/mL. Antibody validated: Western Blot in human samples; Immunohistochemistry in human samples and Immunofluorescence in human samples. All other applications and species not yet tested.

Isotype

IgG

Clonality

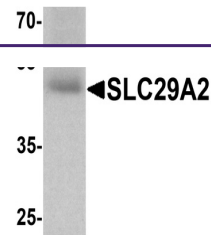
Polyclonal

MW

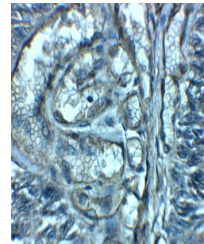
Predicted: 50 kDa Observed: 50 kDa

Uniprot ID
[Q14542](#)
NCBI
[NP_001523](#)
Dilution Range

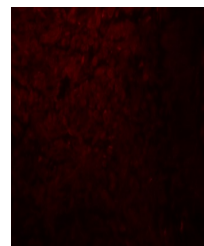
SLC29A2 antibody can be used for detection of SLC29A2 by Western blot at 1 - 2 µg/ml. Antibody can also be used for immunohistochemistry starting at 2.5 µg/mL. For immunofluorescence start at 20 µg/mL. Antibody validated: Western Blot in human samples; Immunohistochemistry in human samples and Immunofluorescence in human samples. All other applications and species not yet tested.



Western blot analysis of SLC29A2 in huma...



Immunohistochemistry of SLC29A2 in human...



Immunofluorescence of SLC29A2 in human b...