
Product Datasheet

SLC35D1 Antibody (orb1238946)

Description

SLC35D1 Antibody

Species/Host

Rabbit

Reactivity

Human

Conjugation

Unconjugated

Tested

ELISA, ICC, WB

Applications
Immunogen

Slc35D1 antibody was raised against a 20 amino acid synthetic peptide near the carboxy terminus of the human Slc35D1. The immunogen is located within the last 50 amino acids of Slc35D1.

Target

SLC35D1

Preservatives

Slc35D1 Antibody is supplied in PBS containing 0.02% sodium azide.

Form/Appearance

Liquid

Concentration

1 mg/mL

Storage

Slc35D1 antibody can be stored at 4°C for three months and -20°C, stable for up to one year. As with all antibodies care should be taken to avoid repeated freeze thaw cycles. Antibodies should not be exposed to prolonged high temperatures.

Note

For research use only

Application notes

Slc35D1 antibody can be used for detection of Slc35D1 by Western blot at 1 - 2 µg/mL. Antibody can also be used for immunocytochemistry starting at 5 µg/mL. Antibody validated: Western Blot in human samples and Immunocytochemistry in human samples. All other applications and species not yet tested.

Isotype

IgG

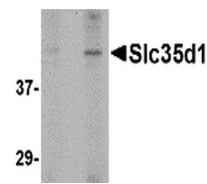
Clonality

Polyclonal

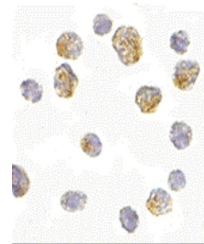
Uniprot ID
[Q9NTN3](#)
NCBI
[NP_055954](#)
Dilution Range

Slc35D1 antibody can be used for detection of Slc35D1 by Western blot at 1 - 2 µg/mL. Antibody can also be used for immunocytochemistry starting at 5 µg/mL. Antibody validated: Western Blot in human samples and Immunocytochemistry in human samples. All other applications and species not yet tested.

A B



Western blot analysis of Slc35D1 in Daud...



Immunocytochemistry of Slc35D1 in Daudi ...