

---

## Product Datasheet

### FEM1B Antibody (orb1238938)

**Description**

FEM1B Antibody

**Species/Host**

Rabbit

**Reactivity**

Human, Mouse, Rat

**Conjugation**

Unconjugated

**Tested**

ELISA, IF, IHC-P, WB

**Applications**
**Immunogen**

F1A antibody was raised against a 14 amino acid peptide near the carboxy terminus of human F1A. The immunogen is located within the last 50 amino acids of F1A alpha.

**Target**

FEM1B

**Preservatives**

F1A alpha Antibody is supplied in PBS containing 0.02% sodium azide.

**Form/Appearance**

Liquid

**Concentration**

1 mg/ml

**Storage**

F1A alpha antibody can be stored at 4°C for three months and -20°C, stable for up to one year. As with all antibodies care should be taken to avoid repeated freeze thaw cycles. Antibodies should not be exposed to prolonged high temperatures.

**Note**

For research use only

**Application notes**

F1Ab antibody can be used for detection of F1Ab by Western blot at 1 µg/mL. An approximately 70 kDa band can be detected. Antibody can also be used for immunohistochemistry starting at 5 µg/mL. For immunofluorescence start at 20 µg/mL. Antibody validated: Western Blot in mouse and rat samples; Immunohistochemistry in mouse samples and Immunofluorescence in mouse samples. All other applications and species not yet tested.

**Isotype**

IgG

**Clonality**

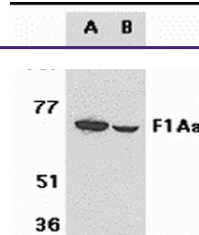
Polyclonal

**MW**

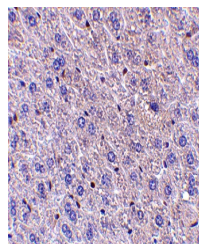
70 kDa

**Uniprot ID**
[Q9UK73](#)
**NCBI**
[AAF05314](#)
**Dilution Range**

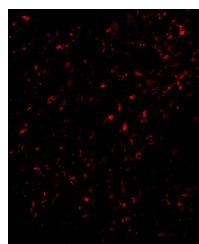
F1Ab antibody can be used for detection of F1Ab by Western blot at 1 µg/mL. An approximately 70 kDa band can be detected. Antibody can also be used for immunohistochemistry starting at 5 µg/mL. For



Western blot analysis of F1A alpha in mo...



Immunohistochemistry of F1A alpha in mou...



Immunofluorescence of F1A alpha in Mouse...