
Product Datasheet

SLITRK2 Antibody (orb1238936)

Description

SLITRK2 Antibody

Species/Host

Rabbit

Reactivity

Human, Mouse, Rat

Conjugation

Unconjugated

Tested

ELISA, IF, IHC-P, WB

Applications
Immunogen

Slitrk2 antibody was raised against a 16 amino acid synthetic peptide from near the center of human Slitrk2. The immunogen is located within amino acids 650 - 700 of Slitrk2.

Target

SLITRK2

Preservatives

Slitrk2 Antibody is supplied in PBS containing 0.02% sodium azide.

Form/Appearance

Liquid

Concentration

1 mg/mL

Storage

Slitrk2 antibody can be stored at 4°C for three months and -20°C, stable for up to one year. As with all antibodies care should be taken to avoid repeated freeze thaw cycles. Antibodies should not be exposed to prolonged high temperatures.

Note

For research use only

Application notes

Slitrk2 antibody can be used for detection of Slitrk2 by Western blot at 1 - 2 µg/mL. Antibody can also be used for immunohistochemistry starting at 2.5 µg/mL. For immunofluorescence start at 20 µg/mL. Antibody validated: Western Blot in mouse samples; Immunohistochemistry in human samples and Immunofluorescence in human samples. All other applications and species not yet tested.

Isotype

IgG

Clonality

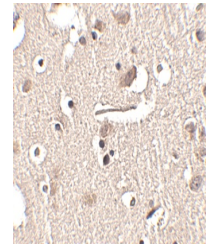
Polyclonal

Uniprot ID
[Q9H156](#)
NCBI
[Q9H156](#)
Dilution Range

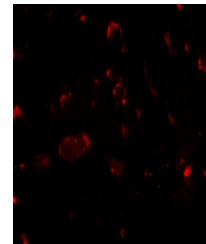
Slitrk2 antibody can be used for detection of Slitrk2 by Western blot at 1 - 2 µg/mL. Antibody can also be used for immunohistochemistry starting at 2.5 µg/mL. For immunofluorescence start at 20 µg/mL. Antibody validated: Western Blot in mouse samples; Immunohistochemistry in human samples



Western blot analysis of Slitrk2 in mouse...



Immunohistochemistry of Slitrk2 in human...



Immunofluorescence of slitrk2 in human b...