
Product Datasheet

SLITRK3 Antibody (orb1238935)

Description

SLITRK3 Antibody

Species/Host

Rabbit

Reactivity

Human, Mouse

Conjugation

Unconjugated

Tested Applications

ELISA, IF, IHC-P, WB

Immunogen

Slitrk3 antibody was raised against a 14 amino acid synthetic peptide from near the carboxy terminus of human Slitrk3. The immunogen is located within amino acids 780 - 830 of Slitrk3.

Target

SLITRK3

Preservatives

Slitrk3 Antibody is supplied in PBS containing 0.02% sodium azide.

Form/Appearance

Liquid

Concentration

1 mg/mL

Storage

Slitrk3 antibody can be stored at 4°C for three months and -20°C, stable for up to one year. As with all antibodies care should be taken to avoid repeated freeze thaw cycles. Antibodies should not be exposed to prolonged high temperatures.

Note

For research use only

Application notes

Slitrk2 antibody can be used for detection of Slitrk2 by Western blot at 0.25 and 0.5 µg/mL. Antibody can also be used for immunohistochemistry starting at 2.5 µg/mL. For immunofluorescence start at 20 µg/mL. Antibody validated: Western Blot in human samples; Immunohistochemistry in human samples and Immunofluorescence in human samples. All other applications and species not yet tested.

Isotype

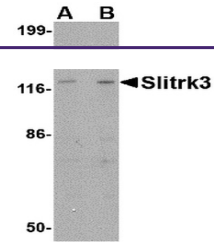
IgG

Clonality

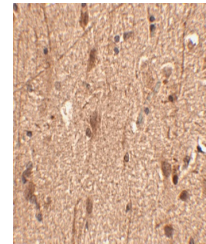
Polyclonal

Uniprot ID
[O94933](#)
NCBI
[O94933](#)
Dilution Range

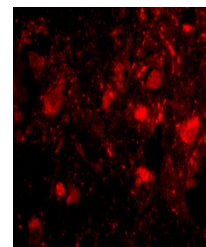
Slitrk2 antibody can be used for detection of Slitrk2 by Western blot at 0.25 and 0.5 µg/mL. Antibody can also be used for immunohistochemistry starting at 2.5 µg/mL. For immunofluorescence start at 20 µg/mL. Antibody validated: Western Blot in human samples; Immunohistochemistry in human samples



Western blot analysis of Slitrk3 in SK-N...



Immunohistochemistry of Slitrk3 in human...



Immunofluorescence of slitrk3 in human b...