

---

## Product Datasheet

### SLITRK3 Antibody (orb1238934)

**Description**

SLITRK3 Antibody

**Species/Host**

Rabbit

**Reactivity**

Human, Mouse

**Conjugation**

Unconjugated

**Tested Applications**

ELISA, IF, IHC-P, WB

**Immunogen**

Slitrk3 antibody was raised against a 14 amino acid synthetic peptide from near the carboxy terminus of human Slitrk3. The immunogen is located within amino acids 320 - 370 of Slitrk3.

**Target**

SLITRK3

**Preservatives**

Slitrk3 Antibody is supplied in PBS containing 0.02% sodium azide.

**Form/Appearance**

Liquid

**Concentration**

1 mg/mL

**Storage**

Slitrk3 antibody can be stored at 4°C for three months and -20°C, stable for up to one year. As with all antibodies care should be taken to avoid repeated freeze thaw cycles. Antibodies should not be exposed to prolonged high temperatures.

**Note**

For research use only

**Application notes**

Slitrk3 antibody can be used for detection of Slitrk3 by Western blot at 0.5 - 1 µg/mL. Antibody can also be used for immunohistochemistry starting at 2.5 µg/mL. For immunofluorescence start at 20 µg/mL. Antibody validated: Western Blot in human samples; Immunohistochemistry in human samples and Immunofluorescence in human samples. All other applications and species not yet tested.

**Isotype**

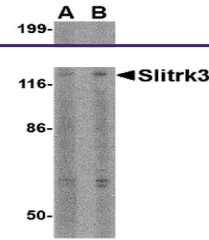
IgG

**Clonality**

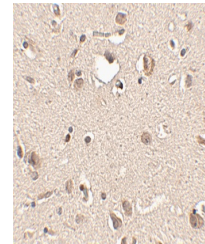
Polyclonal

**Uniprot ID**
[O94933](#)
**NCBI**
[O94933](#)
**Dilution Range**

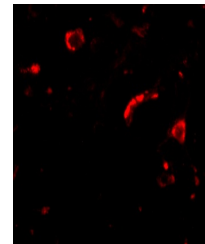
Slitrk3 antibody can be used for detection of Slitrk3 by Western blot at 0.5 - 1 µg/mL. Antibody can also be used for immunohistochemistry starting at 2.5 µg/mL. For immunofluorescence start at 20 µg/mL. Antibody validated: Western Blot in human samples; Immunohistochemistry in human samples



Western blot analysis of Slitrk3 in SK-N...



Immunohistochemistry of Slitrk3 in human...



Immunofluorescence of slitrk3 in human b...