
Product Datasheet

SLITRK4 Antibody (orb1238932)

Description

SLITRK4 Antibody

Species/Host

Rabbit

Reactivity

Human, Mouse, Rat

Conjugation

Unconjugated

Tested Applications

ELISA, IF, IHC-P, WB

Immunogen

Slitrk4 antibody was raised against a 13 amino acid synthetic peptide from near the carboxy terminus of human Slitrk4. The immunogen is located within amino acids 760 - 810 of Slitrk4.

Target

SLITRK4

Preservatives

Slitrk4 Antibody is supplied in PBS containing 0.02% sodium azide.

Form/Appearance

Liquid

Concentration

1 mg/mL

Storage

Slitrk4 antibody can be stored at 4°C for three months and -20°C, stable for up to one year. As with all antibodies care should be taken to avoid repeated freeze thaw cycles. Antibodies should not be exposed to prolonged high temperatures.

Note

For research use only

Application notes

Slitrk4 antibody can be used for detection of Slitrk4 by Western blot at 0.5 - 1 µg/mL. Antibody can also be used for immunohistochemistry starting at 2.5 µg/mL. For immunofluorescence start at 20 µg/mL. Antibody validated: Western Blot in mouse samples; Immunohistochemistry in human samples and Immunofluorescence in human samples. All other applications and species not yet tested.

Isotype

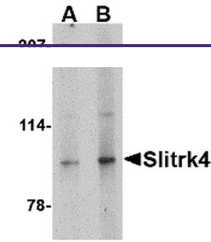
IgG

Clonality

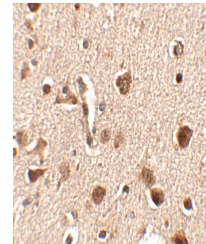
Polyclonal

Uniprot ID
[Q8IW52](#)
NCBI
[Q8IW52](#)
Dilution Range

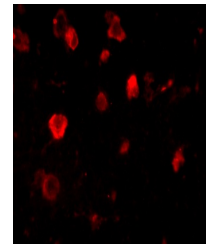
Slitrk4 antibody can be used for detection of Slitrk4 by Western blot at 0.5 - 1 µg/mL. Antibody can also be used for immunohistochemistry starting at 2.5 µg/mL. For immunofluorescence start at 20 µg/mL. Antibody validated: Western Blot in mouse samples; Immunohistochemistry in human samples



Western blot analysis of Slitrk4 in mouse...



Immunohistochemistry of Slitrk4 in human...



Immunofluorescence of slitrk4 in human b...