
Product Datasheet

SLITRK5 Antibody (orb1238930)

Description

SLITRK5 Antibody

Species/Host

Rabbit

Reactivity

Human, Mouse, Rat

Conjugation

Unconjugated

Tested Applications

ELISA, IF, IHC-P, WB

Immunogen

Slitrk5 antibody was raised against a 15 amino acid synthetic peptide from near the center of human Slitrk5. The immunogen is located within amino acids 330 - 380 of Slitrk5.

Target

SLITRK5

Preservatives

Slitrk5 Antibody is supplied in PBS containing 0.02% sodium azide.

Form/Appearance

Liquid

Concentration

1 mg/mL

Storage

Slitrk5 antibody can be stored at 4°C for three months and -20°C, stable for up to one year. As with all antibodies care should be taken to avoid repeated freeze thaw cycles. Antibodies should not be exposed to prolonged high temperatures.

Note

For research use only

Application notes

Slitrk5 antibody can be used for detection of Slitrk5 by Western blot at 1 µg/mL. Antibody can also be used for immunohistochemistry starting at 2.5 µg/mL. For immunofluorescence start at 20 µg/mL. Antibody validated: Western Blot in mouse samples; Immunohistochemistry in human samples and Immunofluorescence in human samples. All other applications and species not yet tested.

Isotype

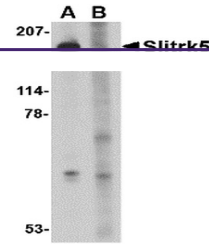
IgG

Clonality

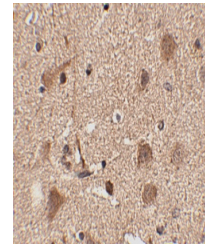
Polyclonal

Uniprot ID
[O94991](#)
NCBI
[O94991](#)
Dilution Range

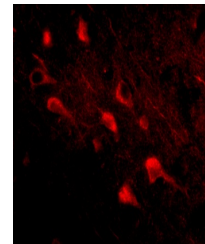
Slitrk5 antibody can be used for detection of Slitrk5 by Western blot at 1 µg/mL. Antibody can also be used for immunohistochemistry starting at 2.5 µg/mL. For immunofluorescence start at 20 µg/mL. Antibody validated: Western Blot in mouse samples; Immunohistochemistry in human samples



Western blot analysis of Slitrk5 in 3T3 ...



Immunohistochemistry of Slitrk5 in human...



Immunofluorescence of slitrk5 in human b...