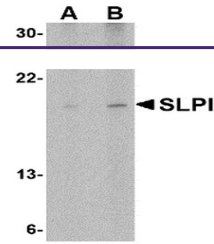


---

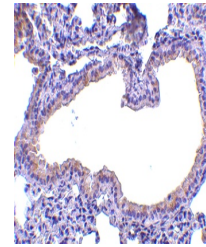
## Product Datasheet

### SLPI Antibody (orb1238927)

<b>Description</b>	SLPI Antibody
<b>Species/Host</b>	Rabbit
<b>Reactivity</b>	Human, Mouse
<b>Conjugation</b>	Unconjugated
<b>Tested Applications</b>	ELISA, IHC-P, WB
<b>Immunogen</b>	SLPI antibody was raised against a 17 amino acid synthetic peptide from near the center of human SLPI. The immunogen is located within amino acids 60 - 110 of SLPI.
<b>Target</b>	SLPI
<b>Preservatives</b>	SLPI Antibody is supplied in PBS containing 0.02% sodium azide.
<b>Form/Appearance</b>	Liquid
<b>Concentration</b>	1 mg/mL
<b>Storage</b>	SLPI antibody can be stored at 4°C for three months and -20°C, stable for up to one year. As with all antibodies care should be taken to avoid repeated freeze thaw cycles. Antibodies should not be exposed to prolonged high temperatures.
<b>Note</b>	For research use only
<b>Application notes</b>	SLPI antibody can be used for detection of SLPI by Western blot at 1 - 2 µg/mL. Antibody can also be used for immunohistochemistry starting at 10 µg/mL. Antibody validated: Western Blot in human samples and Immunohistochemistry in mouse samples. All other applications and species not yet tested.
<b>Isotype</b>	IgG
<b>Clonality</b>	Polyclonal
<b>MW</b>	Predicted: 15 kDa Observed: 19 kDa
<b>Uniprot ID</b>	<a href="#">P03973</a>
<b>NCBI</b>	<a href="#">CAA28187</a>
<b>Dilution Range</b>	SLPI antibody can be used for detection of SLPI by Western blot at 1 - 2 µg/mL. Antibody can also be used for immunohistochemistry starting at 10 µg/mL. Antibody validated: Western Blot in human samples and Immunohistochemistry in mouse samples. All other applications and species not yet tested.



Western blot analysis of SLPI in Daudi c...



Immunohistochemistry of SLPI in mouse lu...