
Product Datasheet

GABARAP Antibody (orb1238924)

Description

GABARAP Antibody

Species/Host

Rabbit

Reactivity

Human, Mouse, Rat

Conjugation

Unconjugated

Tested Applications

ELISA, IF, IHC-P, WB

Immunogen

GABARAP antibody was raised against a 19 amino acid peptide near the amino terminus of human GABARAP. The immunogen is located within the first 50 amino acids of GABARAP.

Target

GABARAP

Preservatives

GABARAP Antibody is supplied in PBS containing 0.02% sodium azide.

Form/Appearance

Liquid

Concentration

1 mg/mL

Storage

GABARAP antibody can be stored at 4°C for three months and -20°C, stable for up to one year.

Note

For research use only

Application notes

GABARAP antibody can be used for detection of GABARAP by Western blot at 1 - 2 µg/mL. Antibody can also be used for immunohistochemistry starting at 5 µg/mL. For immunofluorescence start at 20 µg/mL. Antibody validated: Western Blot in human samples; Immunohistochemistry in mouse samples and Immunofluorescence in human and mouse samples. All other applications and species not yet tested.

Isotype

IgG

Clonality

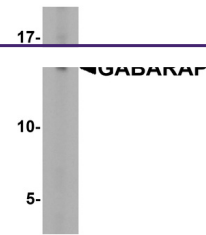
Polyclonal

MW

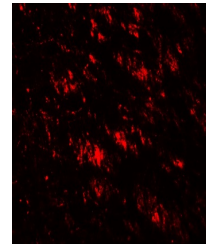
Predicted: 13kDa Observed: 15 kDa

Uniprot ID
[O95166](#)
NCBI
[NP_009209](#)
Dilution Range

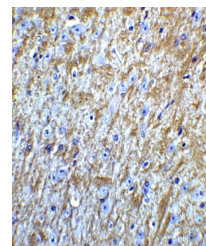
GABARAP antibody can be used for detection of GABARAP by Western blot at 1 - 2 µg/mL. Antibody can also be used for immunohistochemistry starting at 5 µg/mL. For immunofluorescence start at 20 µg/mL. Antibody validated: Western Blot in human samples; Immunohistochemistry in mouse samples and Immunofluorescence in human and mouse samples.



Western blot analysis of GABARAP in HeLa...



Immunofluorescence of GABARAP in human b...



Immunohistochemistry of GABARAP in mouse...