
Product Datasheet

GFRA1 Antibody (orb1238923)

Description

GFRA1 Antibody

Species/Host

Rabbit

Conjugation

Unconjugated

Tested Applications

ELISA, IF, IHC-P, WB

Immunogen

GFR alpha 1 antibody was raised against a 14 amino acid peptide near the center of human GFR alpha 1. The immunogen is located within amino acids 360 - 410 of GFR alpha 1.

Target

GFRA1

Preservatives

GFR alpha 1 Antibody is supplied in PBS containing 0.02% sodium azide.

Form/Appearance

Liquid

Concentration

1 mg/mL

Storage

GFR alpha 1 antibody can be stored at 4°C up to one year. Antibodies should not be exposed to prolonged high temperatures.

Note

For research use only

Application notes

GFR alpha 1 antibody can be used for detection of GFR alpha 1 by Western blot at 1 µg/mL. Antibody can also be used for immunohistochemistry starting at 1 µg/mL. Antibody validated: Western Blot in human samples; Immunohistochemistry in human samples and Immunofluorescence in human samples. All other applications and species not yet tested.

Isotype

IgG

Clonality

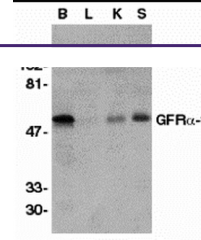
Polyclonal

MW

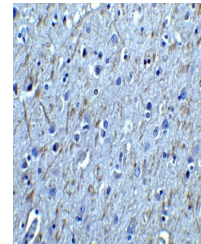
51 kDa

Uniprot ID
[P56159](#)
NCBI
[P56159](#)
Dilution Range

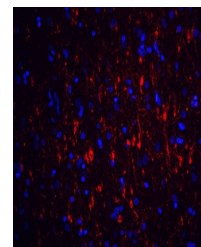
GFR alpha 1 antibody can be used for detection of GFR alpha 1 by Western blot at 1 µg/mL. Antibody can also be used for immunohistochemistry starting at 1 µg/mL. Antibody validated: Western Blot in human samples; Immunohistochemistry in human samples and Immunofluorescence in human samples. All other applications and species not yet tested.



Western blot analysis of GFR alpha 1 in ...



Immunohistochemistry of GFR alpha 1 in h...



Immunofluorescence of GFR alpha 1 in hum...