

---

## Product Datasheet

### BAG4 Antibody (orb1238917)

**Description**

BAG4 Antibody

**Species/Host**

Rabbit

**Reactivity**

Human, Mouse, Rat

**Conjugation**

Unconjugated

**Tested Applications**

ELISA, ICC, IF, WB

**Immunogen**

SODD antibody was raised against a peptide corresponding to amino acids near the amino terminus of human SODD. The immunogen is located within the first 50 amino acids of SODD.

**Target**

BAG4

**Preservatives**

SODD Antibody is supplied in PBS containing 0.02% sodium azide.

**Form/Appearance**

Liquid

**Concentration**

1 mg/ml

**Storage**

SODD antibody can be stored at 4°C for three months and -20°C, stable for up to one year. As with all antibodies care should be taken to avoid repeated freeze thaw cycles. Antibodies should not be exposed to prolonged high temperatures.

**Note**

For research use only

**Application notes**

SODD antibody can be used for detection of SODD by Western blot at 0.5 µg/mL. An approximately 60 kDa band can be detected. Antibody can also be used for immunocytochemistry starting at 5 µg/mL. For immunofluorescence start at 20 µg/mL. Antibody validated: Western Blot in human samples; Immunocytochemistry in human samples and Immunofluorescence in human samples. All other applications and species not yet tested.

**Isotype**

IgG

**Clonality**

Polyclonal

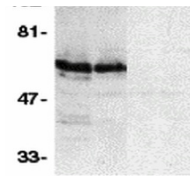
**MW**

60 kDa

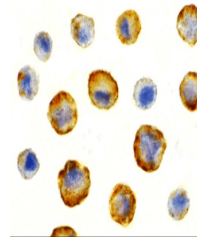
**Uniprot ID**
[O95429](#)
**NCBI**
[AF111116](#)
**Dilution Range**

SODD antibody can be used for detection of SODD by Western blot at 0.5 µg/mL. An approximately 60 kDa band can be detected. Antibody can also be used for immunocytochemistry starting at 5 µg/mL. For

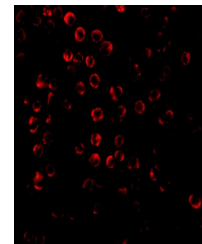
1 2 3 4



Western blot analysis of SODD in HeLa (1...



Immunocytochemistry of SODD in HeLa cell...



Immunofluorescence of SODD in HeLa cells...