

---

## Product Datasheet

### IL17RA Antibody (orb1238913)

**Description**

IL17RA Antibody

**Species/Host**

Rabbit

**Reactivity**

Human, Mouse, Rat

**Conjugation**

Unconjugated

**Tested Applications**

ELISA, IF, IHC-P, WB

**Immunogen**

IL-17RA antibody was raised against an 18 amino acid peptide near the amino terminus of human IL-17RA. The immunogen is located within amino acids 150 - 200 of IL-17RA.

**Target**

IL17RA

**Preservatives**

IL-17RA Antibody is supplied in PBS containing 0.02% sodium azide.

**Form/Appearance**

Liquid

**Concentration**

1 mg/mL

**Storage**

IL-17RA antibody can be stored at 4°C up to one year. Antibodies should not be exposed to prolonged high temperatures.

**Note**

For research use only

**Application notes**

IL-17RA antibody can be used for detection of IL-17RA by Western blot at 1 - 2 µg/mL. Antibody validated: Western Blot in mouse samples; Immunohistochemistry in human samples and Immunofluorescence in human samples. All other applications and species not yet tested.

**Isotype**

IgG

**Clonality**

Polyclonal

**MW**

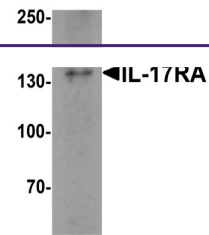
Predicted: 95 kDa Observed: 135 kDa

**Uniprot ID**
[Q96F46](#)
**NCBI**
[NP\\_055154](#)
**Dilution Range**

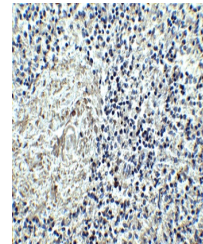
IL-17RA antibody can be used for detection of IL-17RA by Western blot at 1 - 2 µg/mL. Antibody validated: Western Blot in mouse samples; Immunohistochemistry in human samples and Immunofluorescence in human samples. All other applications and species not yet tested.

**Expiration Date**

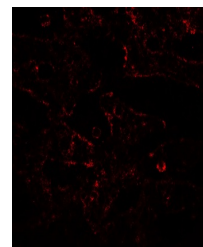
12 months from date of receipt.



Western blot analysis of IL17RA in A20 c...



Immunohistochemistry of IL-17RA in human...



Immunofluorescence of IL-17RA in human S...