
Product Datasheet

SPG11 Antibody (orb1238907)

Description

SPG11 Antibody

Species/Host

Rabbit

Reactivity

Human, Mouse, Rat

Conjugation

Unconjugated

Tested Applications

ELISA, IHC-P, WB

Immunogen

SPG11 antibody was raised against a 15 amino acid synthetic peptide near the carboxy terminus of human SPG11. The immunogen is located within amino acids 2360 - 2410 of SPG11.

Target

SPG11

Preservatives

SPG11 Antibody is supplied in PBS containing 0.02% sodium azide.

Form/Appearance

Liquid

Concentration

1 mg/mL

Storage

SPG11 antibody can be stored at 4°C for three months and -20°C, stable for up to one year. As with all antibodies care should be taken to avoid repeated freeze thaw cycles. Antibodies should not be exposed to prolonged high temperatures.

Note

For research use only

Application notes

SPG11 antibody can be used for detection of SPG11 by Western blot at 0.5 - 1 µg/mL. Antibody can also be used for immunohistochemistry starting at 2.5 µg/mL. Antibody validated: Western Blot in mouse samples and Immunohistochemistry in mouse samples. All other applications and species not yet tested.

Isotype

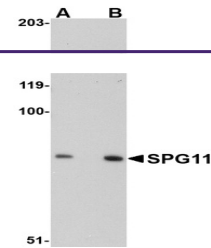
IgG

Clonality

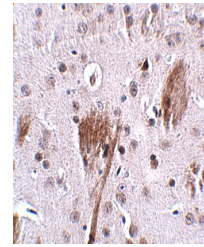
Polyclonal

Uniprot ID
[Q96JI7](#)
NCBI
[AAI53880](#)
Dilution Range

SPG11 antibody can be used for detection of SPG11 by Western blot at 0.5 - 1 µg/mL. Antibody can also be used for immunohistochemistry starting at 2.5 µg/mL. Antibody validated: Western Blot in mouse samples and Immunohistochemistry in mouse samples. All other applications and species not yet tested.



Western blot analysis of SPG11 in mouse ...



Immunohistochemistry of SPG11 in mouse b...