
Product Datasheet

SPINK2 Antibody (orb1238904)

Description

SPINK2 Antibody

Species/Host

Rabbit

Reactivity

Human, Mouse

Conjugation

Unconjugated

Tested Applications

ELISA, IF, IHC-P, WB

Immunogen

SPINK2 antibody was raised against a 16 amino acid synthetic peptide near the carboxy terminus of mouse SPINK2. The immunogen is located within the last 50 amino acids of SPINK2.

Target

SPINK2

Preservatives

SPINK2 Antibody is supplied in PBS containing 0.02% sodium azide.

Form/Appearance

Liquid

Concentration

1 mg/mL

Storage

SPINK2 antibody can be stored at 4°C for three months and -20°C, stable for up to one year. As with all antibodies care should be taken to avoid repeated freeze thaw cycles. Antibodies should not be exposed to prolonged high temperatures.

Note

For research use only

Application notes

SPINK2 antibody can be used for detection of SPINK2 by Western blot at 1 µg/mL. Antibody can also be used for immunohistochemistry starting at 2.5 µg/mL. For immunofluorescence start at 20 µg/mL. Antibody validated: Western Blot in human samples; Immunohistochemistry in mouse samples and Immunofluorescence in mouse samples. All other applications and species not yet tested.

Isotype

IgG

Clonality

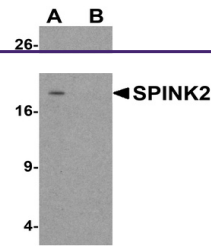
Polyclonal

MW

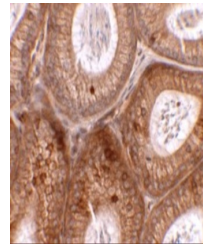
Predicted: 15 kDa Observed: 18 kDa

Uniprot ID
[Q8BMY7](#)
NCBI
[NP_001276693.1](#)
Dilution Range

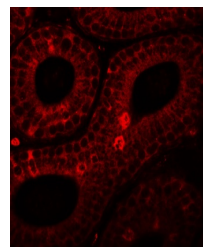
SPINK2 antibody can be used for detection of SPINK2 by Western blot at 1 µg/mL. Antibody can also be used for immunohistochemistry starting at 2.5 µg/mL. For immunofluorescence start at 20 µg/mL. Antibody validated: Western Blot in human



Western blot analysis of SPINK2 in human...



Immunohistochemistry of SPINK2 in mouse ...



Immunofluorescence of SPINK2 in mouse te...