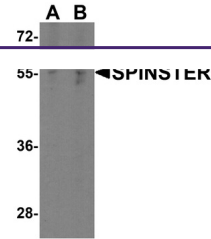


---

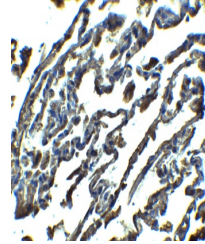
## Product Datasheet

### SPNS1 Antibody (orb1238903)

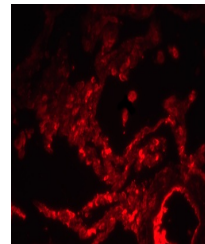
<b>Description</b>	SPNS1 Antibody
<b>Species/Host</b>	Rabbit
<b>Reactivity</b>	Human
<b>Conjugation</b>	Unconjugated
<b>Tested Applications</b>	ELISA, IF, IHC-P, WB
<b>Immunogen</b>	SPINSTER antibody was raised against an 18 amino acid peptide near the amino terminus of human SPINSTER. The immunogen is located within the first 50 amino acids of SPINSTER.
<b>Target</b>	SPNS1
<b>Preservatives</b>	SPINSTER antibody is supplied in PBS containing 0.02% sodium azide.
<b>Form/Appearance</b>	Liquid
<b>Concentration</b>	1 mg/mL
<b>Storage</b>	SPINSTER antibody can be stored at 4°C for three months and -20°C, stable for up to one year.
<b>Note</b>	For research use only
<b>Application notes</b>	SPINSTER antibody can be used for detection of SPINSTER by Western blot at 1 - 2 µg/ml. Antibody can also be used for immunohistochemistry starting at 2.5 µg/mL. For immunofluorescence start at 20 µg/mL. Antibody validated: Western Blot in human samples; Immunohistochemistry in human samples and Immunofluorescence in human samples. All other applications and species not yet tested.
<b>Isotype</b>	IgG
<b>Clonality</b>	Polyclonal
<b>MW</b>	Predicted: 58 kDa Observed: 56 kDa
<b>Uniprot ID</b>	<a href="#">Q9H2V7</a>
<b>NCBI</b>	<a href="#">NP_001135920</a>
<b>Dilution Range</b>	SPINSTER antibody can be used for detection of SPINSTER by Western blot at 1 - 2 µg/ml. Antibody can also be used for immunohistochemistry starting at 2.5 µg/mL. For immunofluorescence start at 20 µg/mL. Antibody validated: Western Blot in human samples; Immunohistochemistry in human samples and Immunofluorescence in human samples. All other applications and species not yet tested.



Western blot analysis of SPINSTER in Hep...



Immunohistochemistry of SPINSTER in huma...



Immunofluorescence of SPINSTER in human

...