

---

## Product Datasheet

### SPRED1 Antibody (orb1238901)

**Description**

SPRED1 Antibody

**Species/Host**

Rabbit

**Reactivity**

Human, Mouse, Rat

**Conjugation**

Unconjugated

**Tested**

ELISA, IHC-P, WB

**Applications**
**Immunogen**

Spred1 antibody was raised against a 20 amino acid synthetic peptide near the center of the human Spred1. The immunogen is located within amino acids 120 - 170 of Spred1.

**Target**

SPRED1

**Preservatives**

Spred1 Antibody is supplied in PBS containing 0.02% sodium azide.

**Form/Appearance**

Liquid

**Concentration**

1 mg/mL

**Storage**

Spred1 antibody can be stored at 4°C for three months and -20°C, stable for up to one year. As with all antibodies care should be taken to avoid repeated freeze thaw cycles. Antibodies should not be exposed to prolonged high temperatures.

**Note**

For research use only

**Application notes**

Spred1 antibody can be used for detection of Spred1 by Western blot at 1 - 2 µg/mL. Antibody can also be used for immunohistochemistry starting at 2.5 µg/mL. Antibody validated: Western Blot in mouse samples and Immunohistochemistry in human samples. All other applications and species not yet tested.

**Isotype**

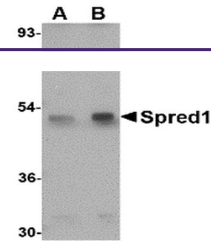
IgG

**Clonality**

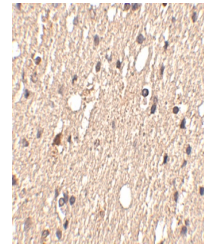
Polyclonal

**Uniprot ID**
[Q7Z699](#)
**NCBI**
[NP\\_689807](#)
**Dilution Range**

Spred1 antibody can be used for detection of Spred1 by Western blot at 1 - 2 µg/mL. Antibody can also be used for immunohistochemistry starting at 2.5 µg/mL. Antibody validated: Western Blot in mouse samples and Immunohistochemistry in human samples. All other applications and species not yet tested.



Western blot analysis of Spred1 in mouse...



Immunohistochemistry of Spred1 in human ...