
Product Datasheet

SREBF2 Antibody (orb1238889)

Description

SREBF2 Antibody

Species/Host

Rabbit

Reactivity

Human, Mouse

Conjugation

Unconjugated

Tested Applications

ELISA, IF, IHC-P, WB

Applications
Immunogen

SREBF2 antibody was raised against a 15 amino acid peptide near the center of human SREBF2. The immunogen is located within amino acids 440 - 490 of SREBF2.

Target

SREBF2

Preservatives

SREBF2 antibody is supplied in PBS containing 0.02% sodium azide.

Form/Appearance

Liquid

Concentration

1 mg/mL

Storage

SREBF2 antibody can be stored at 4°C for three months and -20°C, stable for up to one year.

Note

For research use only

Application notes

SREBF2 antibody can be used for detection of SREBF2 by Western blot at 1 - 2 µg/ml. Antibody can also be used for Immunohistochemistry at 5 µg/mL. For Immunofluorescence start at 20 µg/mL. Antibody validated: Western Blot in human samples; Immunohistochemistry in human samples and Immunofluorescence in human samples. All other applications and species not yet tested.

Isotype

IgG

Clonality

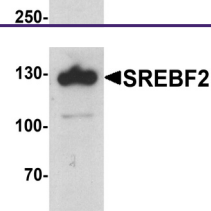
Polyclonal

MW

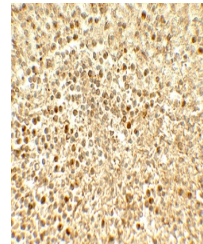
Predicted: 126 kDa Observed: 128 kDa

Uniprot ID
[Q12772](#)
NCBI
[NP_004590](#)
Dilution Range

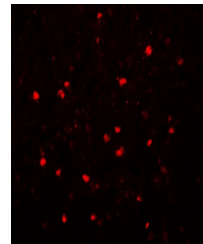
SREBF2 antibody can be used for detection of SREBF2 by Western blot at 1 - 2 µg/ml. Antibody can also be used for Immunohistochemistry at 5 µg/mL. For Immunofluorescence start at 20 µg/mL. Antibody validated: Western Blot in human samples; Immunohistochemistry in human samples and Immunofluorescence in human samples. All other applications and species not yet tested.



Western blot analysis of SREBF2 in PC-3 ...



Immunohistochemistry of SREBF2 in human ...



Immunofluorescence of SREBF2 in human sp...