
Product Datasheet

SRPX Antibody (orb1238887)

Description

SRPX Antibody

Species/Host

Rabbit

Reactivity

Human, Mouse, Rat

Conjugation

Unconjugated

Tested Applications

ELISA, IF, IHC-P, WB

Immunogen

SRPX1 antibody was raised against a 13 amino acid synthetic peptide from near the amino terminus of human SRPX1. The immunogen is located within amino acids 30 - 80 of SRPX1.

Target

SRPX

Preservatives

SRPX1 Antibody is supplied in PBS containing 0.02% sodium azide.

Form/Appearance

Liquid

Concentration

1 mg/mL

Storage

SRPX1 antibody can be stored at 4°C for three months and -20°C, stable for up to one year. As with all antibodies care should be taken to avoid repeated freeze thaw cycles. Antibodies should not be exposed to prolonged high temperatures.

Note

For research use only

Application notes

SRPX1 antibody can be used for detection of SRPX1 by Western blot at 0.25 µg/mL. Antibody can also be used for immunohistochemistry starting at 5 µg/mL. For immunofluorescence start at 20 µg/mL. Antibody validated: Western Blot in human samples; Immunohistochemistry in human samples and Immunofluorescence in human samples. All other applications and species not yet tested.

Isotype

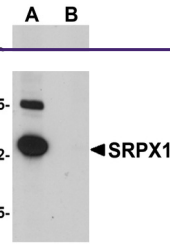
IgG

Clonality

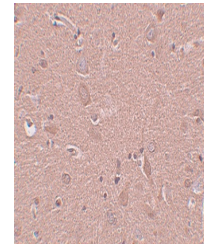
Polyclonal

Uniprot ID
P78539
NCBI
NP_006298
Dilution Range

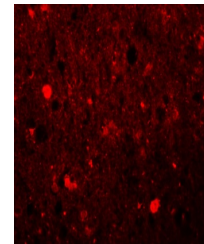
SRPX1 antibody can be used for detection of SRPX1 by Western blot at 0.25 µg/mL. Antibody can also be used for immunohistochemistry starting at 5 µg/mL. For immunofluorescence start at 20 µg/mL. Antibody validated: Western Blot in human samples; Immunohistochemistry in human samples and



Western blot analysis of SRPX1 in SK-N-S...



Immunohistochemistry of SRPX1 in human b...



Immunofluorescence of SRPX1 in human bra...