
Product Datasheet

IRF7 Antibody (orb1238884)

Description

IRF7 Antibody

Species/Host

Rabbit

Reactivity

Human, Mouse, Rat

Conjugation

Unconjugated

Tested Applications

ELISA, IF, IHC-P, WB

Immunogen

IRF7 antibody was raised against a peptide corresponding to 14 amino acids near the carboxy terminus of human IRF7. The immunogen is located within amino acids 420 - 470 of IRF7.

Target

IRF7

Preservatives

IRF7 Antibody is supplied in PBS containing 0.02% sodium azide.

Form/Appearance

Liquid

Concentration

1 mg/mL

Storage

IRF7 antibody can be stored at 4°C for three months and -20°C, stable for up to one year. As with all antibodies care should be taken to avoid repeated freeze thaw cycles. Antibodies should not be exposed to prolonged high temperatures.

Note

For research use only

Application notes

IRF7 antibody can be used for detection of IRF7 by Western blot at 0.5 - 1 µg/mL. Antibody can also be used for immunohistochemistry starting at 5 µg/mL. For immunofluorescence start at 20 µg/mL. Antibody validated: Western Blot in human samples; Immunohistochemistry in human and mouse samples and Immunofluorescence in mouse samples. All other applications and species not yet tested.

Isotype

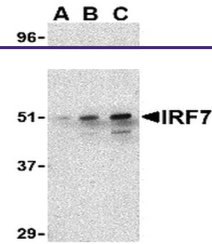
IgG

Clonality

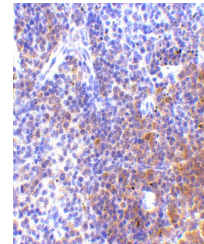
Polyclonal

Uniprot ID
[Q92985](#)
NCBI
[Q92985](#)
Dilution Range

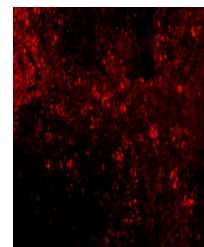
IRF7 antibody can be used for detection of IRF7 by Western blot at 0.5 - 1 µg/mL. Antibody can also be used for immunohistochemistry starting at 5 µg/mL. For immunofluorescence start at 20 µg/mL. Antibody validated: Western Blot in human samples; Immunohistochemistry in human and mouse samples



Western blot analysis of IRF7 in 293 who...



Immunohistochemistry of IRF7 in mouse sp...



Immunofluorescence of IRF7 in Mouse Sple...