
Product Datasheet

ST3GAL6 Antibody (orb1238883)

Description

ST3GAL6 Antibody

Species/Host

Rabbit

Reactivity

Human, Mouse, Rat

Conjugation

Unconjugated

Tested Applications

ELISA, ICC, WB

Immunogen

ST3gal6 antibody was raised against a 16 amino acid synthetic peptide from near the carboxy terminus of human ST3gal6. The immunogen is located within amino acids 230 - 280 of ST3gal6.

Target

ST3GAL6

Preservatives

ST3gal6 Antibody is supplied in PBS containing 0.02% sodium azide.

Form/Appearance

Liquid

Concentration

1 mg/mL

Storage

ST3gal6 antibody can be stored at 4°C for three months and -20°C, stable for up to one year. As with all antibodies care should be taken to avoid repeated freeze thaw cycles. Antibodies should not be exposed to prolonged high temperatures.

Note

For research use only

Application notes

ST3gal6 antibody can be used for detection of ST3gal6 by Western blot at 1 - 2 µg/mL. Antibody can also be used for immunocytochemistry starting at 5 µg/mL. Antibody validated: Western Blot in human samples and Immunocytochemistry in human samples. All other applications and species not yet tested.

Isotype

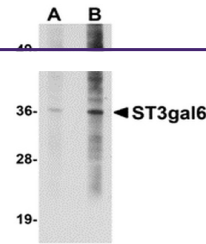
IgG

Clonality

Polyclonal

Uniprot ID
[Q9Y274](#)
NCBI
[NP_006091](#)
Dilution Range

ST3gal6 antibody can be used for detection of ST3gal6 by Western blot at 1 - 2 µg/mL. Antibody can also be used for immunocytochemistry starting at 5 µg/mL. Antibody validated: Western Blot in human samples and Immunocytochemistry in human samples. All other applications and species not yet tested.



Western blot analysis of ST3gal6 in HeLa...



Immunocytochemistry of ST3gal6 in HeLa c...