

---

## Product Datasheet

### STEAP2 Antibody (orb1238877)

**Description**

STEAP2 Antibody

**Species/Host**

Rabbit

**Reactivity**

Human, Mouse

**Conjugation**

Unconjugated

**Tested Applications**

ELISA, IF, IHC-P, WB

**Immunogen**

STEAP2 antibody was raised against a 16 amino acid synthetic peptide from near the carboxy terminus of human STEAP2. The immunogen is located within the last 50 amino acids of STEAP2.

**Target**

STEAP2

**Preservatives**

STEAP2 Antibody is supplied in PBS containing 0.02% sodium azide.

**Form/Appearance**

Liquid

**Concentration**

1 mg/mL

**Storage**

STEAP2 antibody can be stored at 4°C for three months and -20°C, stable for up to one year. As with all antibodies care should be taken to avoid repeated freeze thaw cycles. Antibodies should not be exposed to prolonged high temperatures.

**Note**

For research use only

**Application notes**

STEAP2 antibody can be used for detection of STEAP2 by Western blot at 1 - 2 µg/mL. Antibody can also be used for immunohistochemistry starting at 2.5 µg/mL. For immunofluorescence start at 20 µg/mL. Antibody validated: Western Blot in human samples; Immunohistochemistry in human samples and Immunofluorescence in human samples. All other applications and species not yet tested.

**Isotype**

IgG

**Clonality**

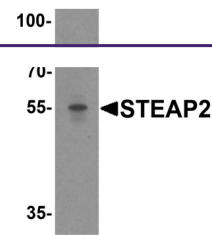
Polyclonal

**MW**

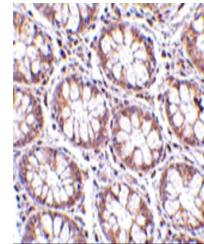
Predicted: 54 kDa Observed: 55 kDa

**Uniprot ID**
[Q8NFT2](#)
**NCBI**
[Q8NFT2](#)
**Dilution Range**

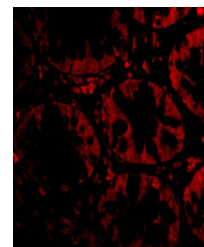
STEAP2 antibody can be used for detection of STEAP2 by Western blot at 1 - 2 µg/mL. Antibody can also be used for immunohistochemistry starting at 2.5 µg/mL. For immunofluorescence start at 20 µg/mL. Antibody validated: Western Blot in human



Western blot analysis of STEAP2 in human...



Immunohistochemistry of STEAP2 in human ...



Immunofluorescence of STEAP2 in Human Co...