
Product Datasheet

STEAP3 Antibody (orb1238876)

Description

STEAP3 Antibody

Species/Host

Rabbit

Reactivity

Human, Mouse, Rat

Conjugation

Unconjugated

Tested Applications

ELISA, IF, IHC-P, WB

Immunogen

STEAP3 antibody was raised against a 15 amino acid synthetic peptide from near the amino terminus of human STEAP3. The immunogen is located within the first 50 amino acids of STEAP3.

Target

STEAP3

Preservatives

STEAP3 Antibody is supplied in PBS containing 0.02% sodium azide.

Form/Appearance

Liquid

Concentration

1 mg/mL

Storage

STEAP3 antibody can be stored at 4°C for three months and -20°C, stable for up to one year. As with all antibodies care should be taken to avoid repeated freeze thaw cycles. Antibodies should not be exposed to prolonged high temperatures.

Note

For research use only

Application notes

STEAP3 antibody can be used for detection of STEAP3 by Western blot at 1 - 2 µg/mL. Antibody can also be used for immunohistochemistry starting at 2.5 µg/mL. For immunofluorescence start at 20 µg/mL. Antibody validated: Western Blot in human samples; Immunohistochemistry in mouse samples and Immunofluorescence in mouse samples. All other applications and species not yet tested.

Isotype

IgG

Clonality

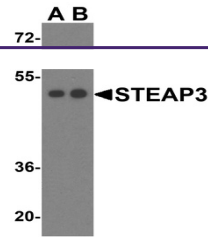
Polyclonal

MW

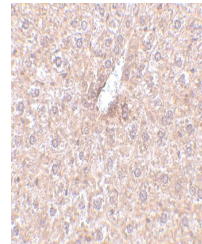
Predicted: 55 kDa Observed: 51 kDa

Uniprot ID
[Q658P3](#)
NCBI
[AAH95421](#)
Dilution Range

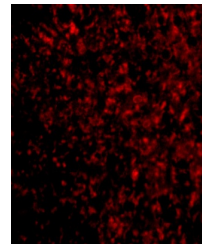
STEAP3 antibody can be used for detection of STEAP3 by Western blot at 1 - 2 µg/mL. Antibody can also be used for immunohistochemistry starting at 2.5 µg/mL. For immunofluorescence start at 20 µg/mL. Antibody validated: Western Blot in human



Western blot analysis of STEAP3 in HeLa ...



Immunohistochemistry of STEAP3 in mouse ...



Immunofluorescence of STEAP3 in Mouse Li...