
Product Datasheet

SUMO2 Antibody (orb1238867)

Description

SUMO2 Antibody

Species/Host

Rabbit

Reactivity

Human, Mouse, Rat

Conjugation

Unconjugated

Tested Applications

ELISA, IF, IHC-P, WB

Immunogen

SUMO2/3 antibody was raised against a 15 amino acid synthetic peptide near the carboxy terminus of human SUMO2. The immunogen is located within the last 50 amino acids of SUMO2/3.

Target

SUMO2

Preservatives

SUMO2/3 Antibody is supplied in PBS containing 0.02% sodium azide.

Form/Appearance

Liquid

Concentration

1 mg/mL

Storage

SUMO2/3 antibody can be stored at 4°C up to one year. Antibodies should not be exposed to prolonged high temperatures.

Note

For research use only

Application notes

SUMO2/3 antibody can be used for detection of SUMO2 and SUMO3 by Western blot at 1 - 2 µg/mL. Antibody can also be used for immunohistochemistry starting at 5 µg/mL. For immunofluorescence start at 20 µg/mL. Antibody validated: Western Blot in human samples; Immunohistochemistry in rat samples and Immunofluorescence in rat samples. All other applications and species not yet tested.

Isotype

IgG

Clonality

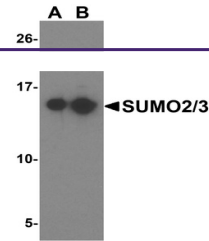
Polyclonal

MW

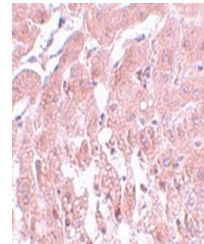
Predicted: 15 kDa Observed: 15 kDa

Uniprot ID
[P61956](#)
NCBI
[AAH71645](#)
Dilution Range

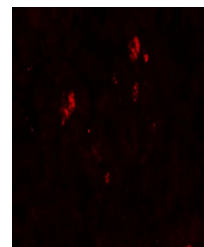
SUMO2/3 antibody can be used for detection of SUMO2 and SUMO3 by Western blot at 1 - 2 µg/mL. Antibody can also be used for immunohistochemistry starting at 5 µg/mL. For immunofluorescence start at 20 µg/mL. Antibody validated: Western Blot in human samples;



Western blot analysis of SUMO2/3 in Jurk...



Immunohistochemistry of SUMO2/3 in rat liv...



Immunofluorescence of SUMO2/3 in rat liv...