

Product Datasheet

SUMO3 Antibody (orb1238866)

Description

SUMO3 Antibody

Species/Host

Rabbit

Reactivity

Human, Mouse, Rat

Conjugation

Unconjugated

Tested Applications

ELISA, IF, IHC-P, WB

Applications
Immunogen

SUMO3 antibody was raised against a 13 amino acid synthetic peptide near the carboxy terminus of human SUMO3. The immunogen is located within the last 50 amino acids of SUMO3.

Target

SUMO3

Preservatives

SUMO3 Antibody is supplied in PBS containing 0.02% sodium azide.

Form/Appearance

Liquid

Concentration

1 mg/mL

Storage

SUMO3 antibody can be stored at 4°C for three months and -20°C, stable for up to one year. As with all antibodies care should be taken to avoid repeated freeze thaw cycles. Antibodies should not be exposed to prolonged high temperatures.

Note

For research use only

Application notes

SUMO3 antibody can be used for detection of SUMO3 by Western blot at 1 - 2 µg/mL. Antibody can also be used for immunohistochemistry starting at 5 µg/mL. For immunofluorescence start at 20 µg/mL. Antibody validated: Western Blot in mouse samples; Immunohistochemistry in rat samples and Immunofluorescence in mouse samples. All other applications and species not yet tested.

Isotype

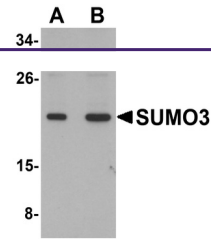
IgG

Clonality

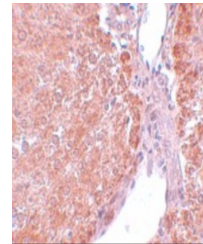
Polyclonal

Uniprot ID
P55854
NCBI
NP_008867
Dilution Range

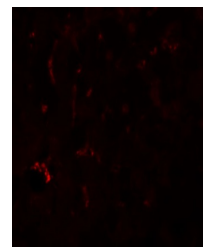
SUMO3 antibody can be used for detection of SUMO3 by Western blot at 1 - 2 µg/mL. Antibody can also be used for immunohistochemistry starting at 5 µg/mL. For immunofluorescence start at 20 µg/mL. Antibody validated: Western Blot in mouse samples; Immunohistochemistry in rat samples and



Western blot analysis of SUMO3 in mouse ...



Immunohistochemistry of SUMO2/3 in rat l...



Immunofluorescence of SUMO3 in mouse liv...