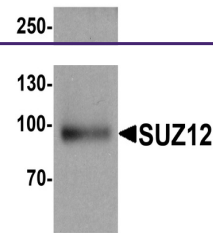


---

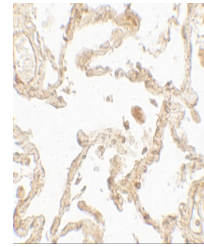
## Product Datasheet

### SUZ12 Antibody (orb1238860)

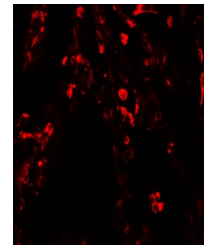
<b>Description</b>	SUZ12 Antibody
<b>Species/Host</b>	Rabbit
<b>Reactivity</b>	Human
<b>Conjugation</b>	Unconjugated
<b>Tested Applications</b>	ELISA, IF, IHC-P, WB
<b>Immunogen</b>	SUZ12 antibody was raised against a 19 amino acid peptide near the center of human SUZ12. The immunogen is located within amino acids 400 - 450 of SUZ12.
<b>Target</b>	SUZ12
<b>Preservatives</b>	SUZ12 antibody is supplied in PBS containing 0.02% sodium azide.
<b>Form/Appearance</b>	Liquid
<b>Concentration</b>	1 mg/mL
<b>Storage</b>	SUZ12 antibody can be stored at 4°C for three months and -20°C, stable for up to one year.
<b>Note</b>	For research use only
<b>Application notes</b>	SUZ12 antibody can be used for detection of SUZ12 by Western blot at 1 - 2 µg/ml. Antibody can also be used for Immunohistochemistry starting at 5 µg/mL. For immunofluorescence start at 20 µg/mL. Antibody validated: Western Blot in human samples; Immunohistochemistry in human samples and Immunofluorescence in human samples. All other applications and species not yet tested.
<b>Isotype</b>	IgG
<b>Clonality</b>	Polyclonal
<b>MW</b>	Predicted: 81 kDa Observed: 96 kDa
<b>Uniprot ID</b>	<a href="#">Q15022</a>
<b>NCBI</b>	<a href="#">NP_056170</a>
<b>Dilution Range</b>	SUZ12 antibody can be used for detection of SUZ12 by Western blot at 1 - 2 µg/ml. Antibody can also be used for Immunohistochemistry starting at 5 µg/mL. For immunofluorescence start at 20 µg/mL. Antibody validated: Western Blot in human samples; Immunohistochemistry in human samples and Immunofluorescence in human samples. All other applications and species not yet tested.



Western blot analysis of SUZ12 in human ...



Immunohistochemistry of SUZ12 in human l...



Immunofluorescence of SUZ12 in human lun...