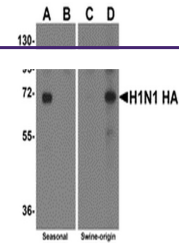
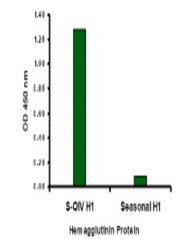

Product Datasheet

HA Antibody (orb1238859)

| | |
|----------------------------|---|
| Description | HA Antibody |
| Species/Host | Rabbit |
| Reactivity | Virus |
| Conjugation | Unconjugated |
| Tested Applications | ELISA, WB |
| Immunogen | Hemagglutinin antibody was raised against a synthetic peptide from the novel swine influenza Hemagglutinin protein. The peptide sequence is unique from the peptide sequence for product 5237 and 5241. This antibody is a cognate pair with product 5231. The immunogen is located within amino acids 120 - 170 of Swine H1N1 Hemagglutinin. |
| Target | HA |
| Preservatives | Swine H1N1 Hemagglutinin Antibody is supplied in PBS containing 0.02% sodium azide. |
| Form/Appearance | Liquid |
| Concentration | 1 mg/mL |
| Storage | Swine H1N1 Hemagglutinin antibody can be stored at 4°C for three months and -20°C, stable for up to one year. As with all antibodies care should be taken to avoid repeated freeze thaw cycles. Antibodies should not be exposed to prolonged high temperatures. |
| Note | For research use only |
| Application notes | Hemagglutinin antibody can be used for the detection of the Hemagglutinin protein from the H1N1 strain of swine influenza A in Western Blot. |
| Isotype | IgG |
| Clonality | Polyclonal |
| Uniprot ID | C4AL34 |
| NCBI | ACQ76314 |
| Dilution Range | Hemagglutinin antibody can be used for the detection of the Hemagglutinin protein from the H1N1 strain of swine influenza A in Western Blot. |
| Expiration Date | 12 months from date of receipt. |



Western blot analysis of Hemagglutinin us...



Swine-origin Hemagglutinin antibody at 2...