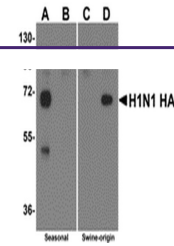
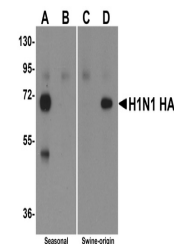

Product Datasheet

HA Antibody (orb1238858)

Description	HA Antibody
Species/Host	Rabbit
Reactivity	Virus
Conjugation	Unconjugated
Tested Applications	ELISA, WB
Immunogen	Hemagglutinin antibody was raised against a synthetic peptide from the novel swine influenza Hemagglutinin protein. The peptide sequence is unique from the peptide sequence for product 5241 and 5233. This antibody is a cognate pair with product 5235. The immunogen is located within amino acids 180 - 230 of Swine H1N1 Hemagglutinin.
Target	HA
Preservatives	Swine H1N1 Hemagglutinin Antibody is supplied in PBS containing 0.02% sodium azide.
Form/Appearance	Liquid
Concentration	1 mg/mL
Storage	Swine H1N1 Hemagglutinin antibody can be stored at 4°C for three months and -20°C, stable for up to one year. As with all antibodies care should be taken to avoid repeated freeze thaw cycles. Antibodies should not be exposed to prolonged high temperatures.
Note	For research use only
Application notes	Hemagglutinin antibody can be used for the detection of the Hemagglutinin protein from the H1N1 strain of swine influenza A in ELISA. It will detect 2 ng of free peptide at 1 µg/mL.
Isotype	IgG
Clonality	Polyclonal
Uniprot ID	C4AL34
NCBI	ACQ76314
Dilution Range	Hemagglutinin antibody can be used for the detection of the Hemagglutinin protein from the H1N1 strain of swine influenza A in ELISA. It will detect 2 ng of free peptide at 1 µg/mL.
Expiration Date	12 months from date of receipt.



Western blot analysis of Hemagglutinin us...



ELISA results using Swine H1N1 Hemagglut...