
Product Datasheet

SYNGR1 Antibody (orb1238857)

Description

SYNGR1 Antibody

Species/Host

Rabbit

Reactivity

Human, Mouse, Rat

Conjugation

Unconjugated

Tested Applications

ELISA, IF, IHC-P, WB

Immunogen

SYNGR1 antibody was raised against a 16 amino acid synthetic peptide from near the center of human SYNGR1. The immunogen is located within amino acids 120 - 170 of SYNGR1.

Target

SYNGR1

Preservatives

SYNGR1 Antibody is supplied in PBS containing 0.02% sodium azide.

Form/Appearance

Liquid

Concentration

1 mg/mL

Storage

Antibody can be stored at 4°C up to one year. Antibodies should not be exposed to prolonged high temperatures

Note

For research use only

Application notes

SYNGR1 antibody can be used for detection of SYNGR1 by Western blot at 1 µg/mL. Antibody can also be used for immunohistochemistry starting at 2.5 µg/mL. For immunofluorescence start at 20 µg/mL. Antibody validated: Western Blot in rat samples; Immunohistochemistry in rat samples and Immunofluorescence in rat samples. All other applications and species not yet tested.

Isotype

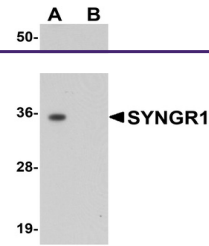
IgG

Clonality

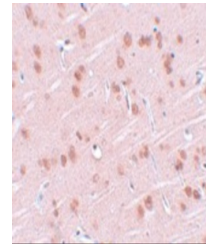
Polyclonal

Uniprot ID
[O43759](#)
NCBI
[CAA05322](#)
Dilution Range

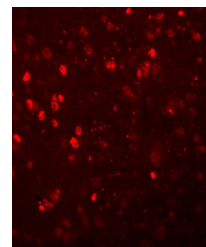
SYNGR1 antibody can be used for detection of SYNGR1 by Western blot at 1 µg/mL. Antibody can also be used for immunohistochemistry starting at 2.5 µg/mL. For immunofluorescence start at 20 µg/mL. Antibody validated: Western Blot in rat samples; Immunohistochemistry in rat samples and Immunofluorescence in rat samples. All other applications and species not yet tested.



Western blot analysis of SYNGR1 in rat b...



Immunohistochemistry of SYNGR1 in rat br...



Immunofluorescence of SYNGR1 in rat brai...