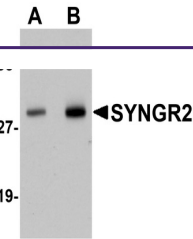
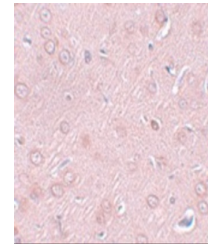

Product Datasheet

SYNGR2 Antibody (orb1238856)

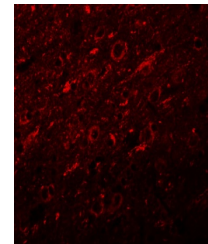
| Description | SYNGR2 Antibody |
|----------------------------|--|
| Species/Host | Rabbit |
| Reactivity | Human, Rat |
| Conjugation | Unconjugated |
| Tested Applications | ELISA, IF, IHC-P, WB |
| Immunogen | SYNGR2 antibody was raised against a 17 amino acid synthetic peptide from near the amino terminus of human SYNGR2. The immunogen is located within amino acids 30 - 80 of SYNGR2. |
| Target | SYNGR2 |
| Preservatives | SYNGR2 Antibody is supplied in PBS containing 0.02% sodium azide. |
| Form/Appearance | Liquid |
| Concentration | 1 mg/mL |
| Storage | SYNGR2 antibody can be stored at 4°C for three months and -20°C, stable for up to one year. As with all antibodies care should be taken to avoid repeated freeze thaw cycles. Antibodies should not be exposed to prolonged high temperatures. |
| Note | For research use only |
| Application notes | SYNGR2 antibody can be used for detection of SYNGR2 by Western blot at 1 - 2 µg/mL. Antibody can also be used for immunohistochemistry starting at 2.5 µg/mL. For immunofluorescence start at 20 µg/mL. Antibody validated: Western Blot in human samples; Immunohistochemistry in rat samples and Immunofluorescence in rat samples. All other applications and species not yet tested. |
| Isotype | IgG |
| Clonality | Polyclonal |
| Uniprot ID | O43760 |
| NCBI | AAI05993 |
| Dilution Range | SYNGR2 antibody can be used for detection of SYNGR2 by Western blot at 1 - 2 µg/mL. Antibody can also be used for immunohistochemistry starting at 2.5 µg/mL. For immunofluorescence start at 20 µg/mL. Antibody validated: Western Blot in human samples; Immunohistochemistry in rat samples and |



Western blot analysis of SYNGR2 in human...



Immunohistochemistry of SYNGR2 in rat br...



Immunofluorescence of SYNGR2 in rat brai...