

---

## Product Datasheet

### **SYNGR4 Antibody (orb1238854)**

**Description**

SYNGR4 Antibody

**Species/Host**

Rabbit

**Reactivity**

Human, Mouse, Rat

**Conjugation**

Unconjugated

**Tested Applications**

ELISA, IF, IHC-P, WB

**Immunogen**

SYNGR4 antibody was raised against a 14 amino acid synthetic peptide from near the amino terminus of human SYNGR4. The immunogen is located within amino acids 30 - 80 of SYNGR4.

**Target**

SYNGR4

**Preservatives**

SYNGR4 Antibody is supplied in PBS containing 0.02% sodium azide.

**Form/Appearance**

Liquid

**Concentration**

1 mg/mL

**Storage**

SYNGR4 antibody can be stored at 4°C for three months and -20°C, stable for up to one year. As with all antibodies care should be taken to avoid repeated freeze thaw cycles. Antibodies should not be exposed to prolonged high temperatures.

**Note**

For research use only

**Application notes**

SYNGR4 antibody can be used for detection of SYNGR4 by Western blot at 1 - 2 µg/mL. Antibody can also be used for immunohistochemistry starting at 5 µg/mL. For immunofluorescence start at 20 µg/mL. Antibody validated: Western Blot in human samples; Immunohistochemistry in rat samples and Immunofluorescence in rat samples. All other applications and species not yet tested.

**Isotype**

IgG

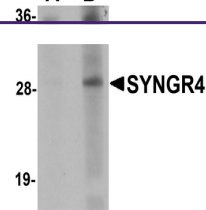
**Clonality**

Polyclonal

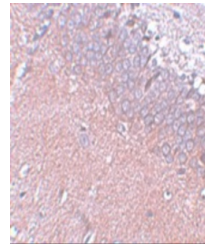
**Uniprot ID**
[O95473](#)
**NCBI**
[CAA09754](#)
**Dilution Range**

SYNGR4 antibody can be used for detection of SYNGR4 by Western blot at 1 - 2 µg/mL. Antibody can also be used for immunohistochemistry starting at 5 µg/mL. For immunofluorescence start at 20 µg/mL. Antibody validated: Western Blot in human samples; Immunohistochemistry in rat samples and

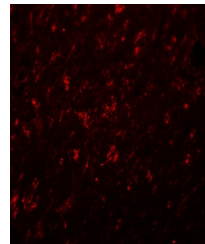
A B



Western blot analysis of SYNGR4 in K562 ...



Immunohistochemistry of SYNGR4 in rat br...



Immunofluorescence of SYNGR4 in rat brai...