

---

## Product Datasheet

### SYNPO2 Antibody (orb1238853)

**Description**

SYNPO2 Antibody

**Species/Host**

Rabbit

**Reactivity**

Human, Mouse

**Conjugation**

Unconjugated

**Tested Applications**

ELISA, IF, IHC-P, WB

**Immunogen**

SYNPO2 antibody was raised against a 20 amino acid synthetic peptide near the amino terminus of human SYNPO2. The immunogen is located within amino acids 320 - 370 of SYNPO2.

**Target**

SYNPO2

**Preservatives**

SYNPO2 Antibody is supplied in PBS containing 0.02% sodium azide.

**Form/Appearance**

Liquid

**Concentration**

1 mg/mL

**Storage**

SYNPO2 antibody can be stored at 4°C for three months and -20°C, stable for up to one year. As with all antibodies care should be taken to avoid repeated freeze thaw cycles. Antibodies should not be exposed to prolonged high temperatures.

**Note**

For research use only

**Application notes**

SYNPO2 antibody can be used for detection of SYNPO2 by Western blot at 1 µg/mL. Antibody can also be used for immunohistochemistry starting at 5 µg/mL. For immunofluorescence start at 20 µg/mL. Antibody validated: Western Blot in human samples; Immunohistochemistry in mouse samples and Immunofluorescence in mouse samples. All other applications and species not yet tested.

**Isotype**

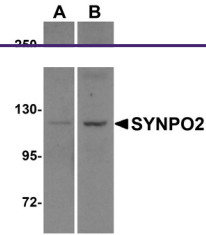
IgG

**Clonality**

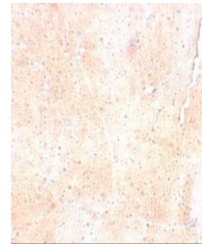
Polyclonal

**Uniprot ID**
[Q9UMS6](#)
**NCBI**
[NP\\_597734](#)
**Dilution Range**

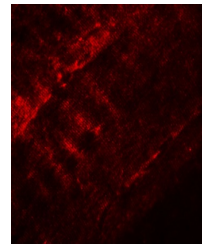
SYNPO2 antibody can be used for detection of SYNPO2 by Western blot at 1 µg/mL. Antibody can also be used for immunohistochemistry starting at 5 µg/mL. For immunofluorescence start at 20 µg/mL. Antibody validated: Western Blot in human samples; Immunohistochemistry in mouse samples



Western blot analysis of SYNPO2 in human...



Immunohistochemistry of SYNPO2 in mouse ...



Immunofluorescence of SYNPO2 in mouse sk...