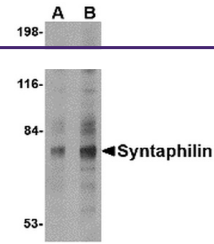


---

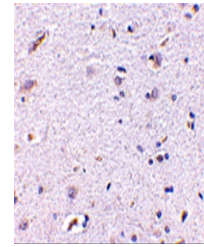
## Product Datasheet

### SNPH Antibody (orb1238851)

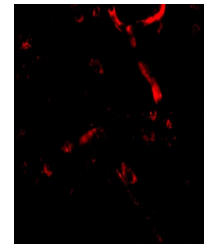
<b>Description</b>	SNPH Antibody
<b>Species/Host</b>	Rabbit
<b>Reactivity</b>	Human, Mouse, Rat
<b>Conjugation</b>	Unconjugated
<b>Tested Applications</b>	ELISA, IF, IHC-P, WB
<b>Immunogen</b>	Syntaphilin antibody was raised against a 18 amino acid synthetic peptide from near the amino terminus of human Syntaphilin. The immunogen is located within amino acids 80 - 130 of Syntaphilin.
<b>Target</b>	SNPH
<b>Preservatives</b>	Syntaphilin Antibody is supplied in PBS containing 0.02% sodium azide.
<b>Form/Appearance</b>	Liquid
<b>Concentration</b>	1 mg/mL
<b>Storage</b>	Syntaphilin antibody can be stored at 4°C for three months and -20°C, stable for up to one year. As with all antibodies care should be taken to avoid repeated freeze thaw cycles. Antibodies should not be exposed to prolonged high temperatures.
<b>Note</b>	For research use only
<b>Application notes</b>	Syntaphilin antibody can be used for detection of Syntaphilin by Western blot at 2 - 4 µg/mL. Despite its predicted molecular weight, Syntaphilin usually migrates at higher molecular weight in SDS-PAGE. Antibody can also be used for immunohistochemistry starting at 5 µg/mL. For immunofluorescence start at 20 µg/mL. Antibody validated: Western Blot in human samples; Immunohistochemistry in human samples and Immunofluorescence in human samples. All other applications and species not yet tested.
<b>Isotype</b>	IgG
<b>Clonality</b>	Polyclonal
<b>Uniprot ID</b>	<b>O15079</b>
<b>NCBI</b>	<b>O15079</b>
<b>Dilution Range</b>	Syntaphilin antibody can be used for detection of Syntaphilin by Western blot at 2 - 4 µg/mL. Despite its predicted molecular weight, Syntaphilin usually migrates at higher molecular weight in SDS-PAGE.



Western blot analysis of Syntaphilin in ...



Immunohistochemistry of Syntaphilin in h...



Immunofluorescence of Syntaphilin in Hum...