
Product Datasheet

SNPH Antibody (orb1238850)

Description

SNPH Antibody

Species/Host

Rabbit

Reactivity

Human, Mouse, Rat

Conjugation

Unconjugated

Tested Applications

ELISA, IF, IHC-P, WB

Immunogen

Syntaphilin antibody was raised against a 16 amino acid synthetic peptide from near the center of human Syntaphilin. The immunogen is located within amino acids 350 - 400 of Syntaphilin.

Target

SNPH

Preservatives

Syntaphilin Antibody is supplied in PBS containing 0.02% sodium azide.

Form/Appearance

Liquid

Concentration

1 mg/mL

Storage

Syntaphilin antibody can be stored at 4°C for three months and -20°C, stable for up to one year. As with all antibodies care should be taken to avoid repeated freeze thaw cycles. Antibodies should not be exposed to prolonged high temperatures.

Note

For research use only

Application notes

Syntaphilin antibody can be used for detection of Syntaphilin by Western blot at 1 - 2 µg/mL. Despite its predicted molecular weight, Syntaphilin usually migrates at higher molecular weight in SDS-PAGE. Antibody can also be used for immunohistochemistry starting at 5 µg/mL. For immunofluorescence start at 20 µg/mL. Antibody validated: Western Blot in rat samples; Immunohistochemistry in human samples and Immunofluorescence in human samples. All other applications and species not yet tested.

Isotype

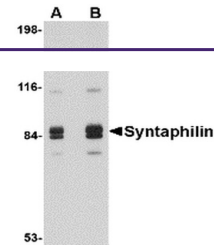
IgG

Clonality

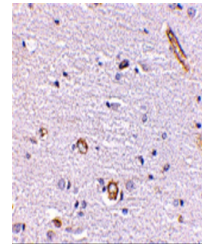
Polyclonal

Uniprot ID
O15079
NCBI
O15079
Dilution Range

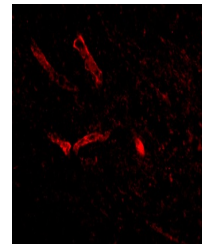
Syntaphilin antibody can be used for detection of Syntaphilin by Western blot at 1 - 2 µg/mL. Despite its predicted molecular weight, Syntaphilin usually migrates at higher molecular weight in SDS-PAGE.



Western blot analysis of Syntaphilin in ...



Immunohistochemistry of Syntaphilin in h...



Immunofluorescence of Syntaphilin in Hum...