
Product Datasheet

SYPL2 Antibody (orb1238849)

Description

SYPL2 Antibody

Species/Host

Rabbit

Reactivity

Human, Mouse, Rat

Conjugation

Unconjugated

Tested

ELISA, IF, IHC-P, WB

Applications
Immunogen

SYPL2 antibody was raised against a 15 amino acid synthetic peptide near the carboxy terminus of human SYPL. The immunogen is located within the last 50 amino acids of SYPL2.

Target

SYPL2

Preservatives

SYPL2 Antibody is supplied in PBS containing 0.02% sodium azide.

Form/Appearance

Liquid

Concentration

1 mg/mL

Storage

SYPL2 antibody can be stored at 4°C for three months and -20°C, stable for up to one year. As with all antibodies care should be taken to avoid repeated freeze thaw cycles. Antibodies should not be exposed to prolonged high temperatures.

Note

For research use only

Application notes

SYPL2 antibody can be used for detection of SYPL2 by Western blot at 1 µg/mL. Antibody can also be used for immunohistochemistry starting at 2.5 µg/mL. For immunofluorescence start at 20 µg/mL. Antibody validated: Western Blot in human samples; Immunohistochemistry in human samples and Immunofluorescence in human samples. All other applications and species not yet tested.

Isotype

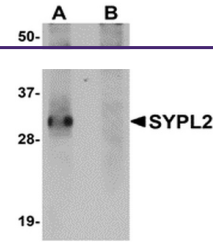
IgG

Clonality

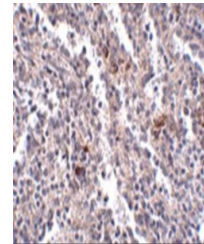
Polyclonal

Uniprot ID
[Q5VXT5](#)
NCBI
[NP_001035799](#)
Dilution Range

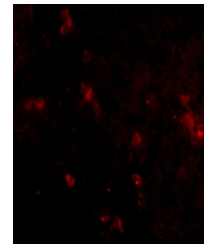
SYPL2 antibody can be used for detection of SYPL2 by Western blot at 1 µg/mL. Antibody can also be used for immunohistochemistry starting at 2.5 µg/mL. For immunofluorescence start at 20 µg/mL. Antibody validated: Western Blot in human samples; Immunohistochemistry in human samples



Western blot analysis of SYPL2 in human ...



Immunohistochemistry of SYPL2 in human s...



Immunofluorescence of SYPL2 in Human Spl...