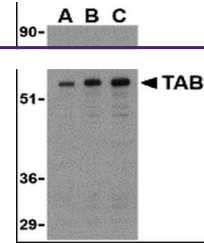
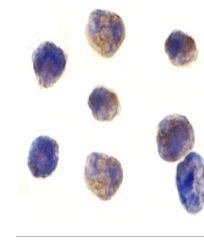

Product Datasheet

TAB1 Antibody (orb1238847)

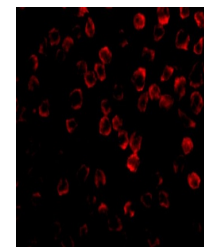
Description	TAB1 Antibody
Species/Host	Rabbit
Reactivity	Human, Mouse
Conjugation	Unconjugated
Tested Applications	ELISA, ICC, IF, WB
Immunogen	TAB1 antibody was raised against a synthetic peptide corresponding to 13 amino acids in the center of human TAB1. The immunogen is located within amino acids 220 - 270 of TAB1.
Target	TAB1
Preservatives	TAB1 Antibody is supplied in PBS containing 0.02% sodium azide.
Form/Appearance	Liquid
Concentration	1 mg/mL
Storage	TAB1 antibody can be stored at 4°C for three months and -20°C, stable for up to one year. As with all antibodies care should be taken to avoid repeated freeze thaw cycles. Antibodies should not be exposed to prolonged high temperatures.
Note	For research use only
Application notes	TAB1 antibody can be used for the detection of TAB1 by Western blot at 0.5 to 2 µg/mL. Antibody can also be used for immunocytochemistry starting at 1 µg/mL. For immunofluorescence start at 2 µg/mL. Antibody validated: Western Blot in mouse samples; Immunocytochemistry in human samples and Immunofluorescence in mouse samples. All other applications and species not yet tested.
Isotype	IgG
Clonality	Polyclonal
Uniprot ID	Q15750
NCBI	NP_006107
Dilution Range	TAB1 antibody can be used for the detection of TAB1 by Western blot at 0.5 to 2 µg/mL. Antibody can also be used for immunocytochemistry starting at 1 µg/mL. For immunofluorescence start at 2 µg/mL. Antibody validated: Western Blot in mouse samples; Immunocytochemistry in human samples



Western blot analysis of TAB1 in 3T3 cel...



Immunocytochemistry of TAB1 in K562 cell...



Immunofluorescence of TAB1 in 3T3 cells ...