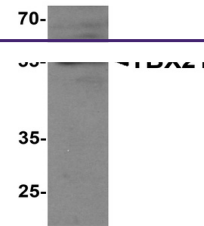
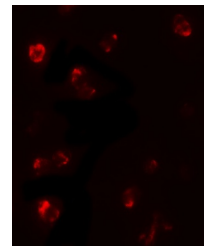

Product Datasheet

TBX21 Antibody (orb1238841)

Description	TBX21 Antibody
Species/Host	Rabbit
Reactivity	Human, Mouse
Conjugation	Unconjugated
Tested Applications	ELISA, IF, WB
Immunogen	TBX21 antibody was raised against a 19 amino acid peptide near the carboxy terminus of human TBX2. The immunogen is located within the last 50 amino acids of TBX21 .
Target	TBX21
Preservatives	TBX21 Antibody is supplied in PBS containing 0.02% sodium azide.
Form/Appearance	Liquid
Concentration	1 mg/mL
Storage	TBX21 antibody can be stored at 4°C for three months and -20°C, stable for up to one year.
Note	For research use only
Application notes	TBX21 antibody can be used for detection of TBX21 by Western blot at 1 - 2 µg/ml. Antibody validated: Western Blot in human samples and Immunofluorescence in human samples. All other applications and species not yet tested.
Isotype	IgG
Clonality	Polyclonal
MW	Predicted: 59 kDa Observed: 55kDa
Uniprot ID	Q9UL17
NCBI	NP_037483
Dilution Range	TBX21 antibody can be used for detection of TBX21 by Western blot at 1 - 2 µg/ml. Antibody validated: Western Blot in human samples and Immunofluorescence in human samples. All other applications and species not yet tested.
Expiration Date	12 months from date of receipt.



Western blot analysis of TBX21 in 293 ce...



Immunofluorescence of TBX21 in 293 cells...