

---

## Product Datasheet

### IL27RA Antibody (orb1238839)

**Description**

IL27RA Antibody

**Species/Host**

Rabbit

**Reactivity**

Human

**Conjugation**

Unconjugated

**Tested Applications**

ELISA, IF, IHC-P, WB

**Immunogen**

TCCR antibody was raised against a synthetic peptide corresponding to amino acids near the amino terminus of human TCCR precursor. The immunogen is located within the first 50 amino acids of TCCR.

**Target**

IL27RA

**Preservatives**

TCCR Antibody is supplied in PBS containing 0.02% sodium azide.

**Form/Appearance**

Liquid

**Concentration**

1 mg/ml

**Storage**

TCCR antibody can be stored at 4°C for three months and -20°C, stable for up to one year. As with all antibodies care should be taken to avoid repeated freeze thaw cycles. Antibodies should not be exposed to prolonged high temperatures.

**Note**

For research use only

**Application notes**

TCCR antibody can be used for detection of TCCR by Western blot at 1 µg/mL. An approximately 70 kDa band can be detected. Antibody can also be used for immunohistochemistry starting at 10 µg/mL. For immunofluorescence start at 20 µg/mL. Antibody validated: Western Blot in human samples; Immunohistochemistry in human samples and Immunofluorescence in human samples. All other applications and species not yet tested.

**Isotype**

IgG

**Clonality**

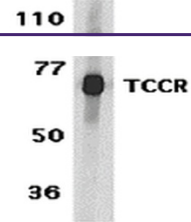
Polyclonal

**MW**

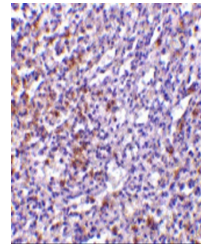
70 kDa

**Uniprot ID**
[Q6UWB1](#)
**NCBI**
[NP\\_004834](#)
**Dilution Range**

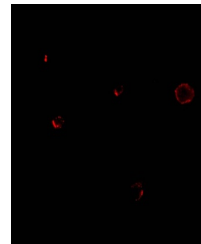
TCCR antibody can be used for detection of TCCR by Western blot at 1 µg/mL. An approximately 70 kDa band can be detected. Antibody can also be used for



Western blot analysis of TCCR expression...



Immunohistochemistry of TCCR in human sp...



Immunofluorescence of TCCR in A549 cells...