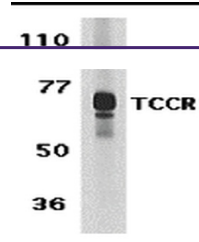
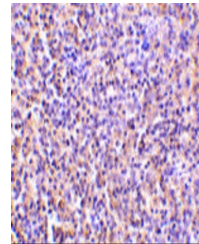

Product Datasheet

IL27RA Antibody (orb1238838)

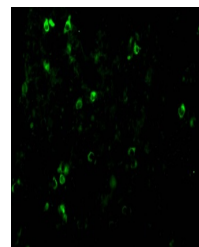
Description	IL27RA Antibody
Species/Host	Rabbit
Reactivity	Human
Conjugation	Unconjugated
Tested Applications	ELISA, IF, IHC-P, WB
Immunogen	TCCR antibody was raised against a synthetic peptide corresponding to amino acids near the carboxy terminus of human TCCR precursor. The sequence is identical to that of mouse TCCR. The immunogen is located within the last 50 amino acids of TCCR.
Target	IL27RA
Preservatives	TCCR Antibody is supplied in PBS containing 0.02% sodium azide.
Form/Appearance	Liquid
Concentration	1 mg/ml
Storage	TCCR antibody can be stored at 4°C for three months and -20°C, stable for up to one year. As with all antibodies care should be taken to avoid repeated freeze thaw cycles. Antibodies should not be exposed to prolonged high temperatures.
Note	For research use only
Application notes	TCCR antibody can be used for detection of TCCR by Western blot at 1 µg/mL. An approximately 70 kDa band can be detected. Antibody can also be used for immunohistochemistry starting at 5 µg/mL. For immunofluorescence start at 20 µg/mL. Antibody validated: Western Blot in human samples; Immunohistochemistry in human samples and Immunofluorescence in human samples. All other applications and species not yet tested.
Isotype	IgG
Clonality	Polyclonal
MW	70 kDa
Uniprot ID	Q6UWB1
NCBI	NP_004834
Dilution Range	TCCR antibody can be used for detection of TCCR by Western blot at 1 µg/mL. An approximately 70 kDa



Western blot analysis of TCCR expression...



Immunohistochemistry of TCCR in human sp...



Immunofluorescence of TCCR in Human Sple...