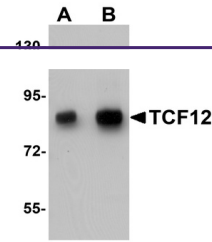
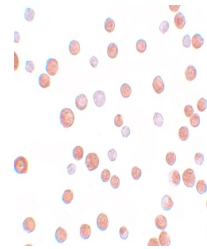

Product Datasheet

TCF12 Antibody (orb1238837)

Description	TCF12 Antibody
Species/Host	Rabbit
Reactivity	Human, Mouse, Rat
Conjugation	Unconjugated
Tested Applications	ELISA, ICC, WB
Immunogen	TCF12 antibody was raised against a 19 amino acid synthetic peptide near the amino terminus of human TCF12. The immunogen is located within amino acids 50 - 100 of TCF12.
Target	TCF12
Preservatives	TCF12 Antibody is supplied in PBS containing 0.02% sodium azide.
Form/Appearance	Liquid
Concentration	1 mg/mL
Storage	TCF12 antibody can be stored at 4°C for three months and -20°C, stable for up to one year. As with all antibodies care should be taken to avoid repeated freeze thaw cycles. Antibodies should not be exposed to prolonged high temperatures.
Note	For research use only
Application notes	TCF12 antibody can be used for detection of TCF12 by Western blot at 0.5 - 1 µg/mL. Antibody can also be used for immunocytochemistry starting at 10 µg/mL. Antibody validated: Western Blot in human samples and Immunocytochemistry in human samples. All other applications and species not yet tested.
Isotype	IgG
Clonality	Polyclonal
Uniprot ID	Q99081
NCBI	AAH50556
Dilution Range	TCF12 antibody can be used for detection of TCF12 by Western blot at 0.5 - 1 µg/mL. Antibody can also be used for immunocytochemistry starting at 10 µg/mL. Antibody validated: Western Blot in human samples and Immunocytochemistry in human samples. All other applications and species not yet tested.



Western blot analysis of TCF12 in HeLa c...



Immunocytochemistry of TCF12 in HeLa cel...