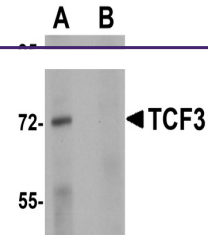


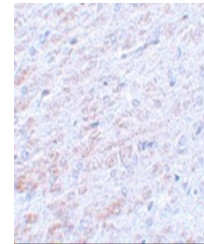
Product Datasheet

TCF3 Antibody (orb1238836)

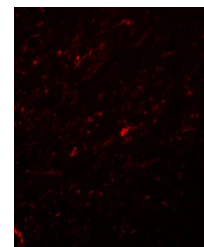
Description	TCF3 Antibody
Species/Host	Rabbit
Reactivity	Human, Mouse, Rat
Conjugation	Unconjugated
Tested Applications	ELISA, IF, IHC-P, WB
Immunogen	TCF3 antibody was raised against a 17 amino acid synthetic peptide near the amino terminus of human TCF3. The immunogen is located within amino acids 150 - 200 of TCF3.
Target	TCF3
Preservatives	TCF3 Antibody is supplied in PBS containing 0.02% sodium azide.
Form/Appearance	Liquid
Concentration	1 mg/mL
Storage	TCF3 antibody can be stored at 4°C for three months and -20°C, stable for up to one year. As with all antibodies care should be taken to avoid repeated freeze thaw cycles. Antibodies should not be exposed to prolonged high temperatures.
Note	For research use only
Application notes	TCF3 antibody can be used for detection of TCF3 by Western blot at 1 µg/mL. Antibody can also be used for immunohistochemistry starting at 5 µg/mL. For immunofluorescence start at 20 µg/mL. Antibody validated: Western Blot in human samples; Immunohistochemistry in rat samples and Immunofluorescence in rat samples. All other applications and species not yet tested.
Isotype	IgG
Clonality	Polyclonal
Uniprot ID	P15923
NCBI	NP_003191
Dilution Range	TCF3 antibody can be used for detection of TCF3 by Western blot at 1 µg/mL. Antibody can also be used for immunohistochemistry starting at 5 µg/mL. For immunofluorescence start at 20 µg/mL. Antibody validated: Western Blot in human samples; Immunohistochemistry in rat samples and



Western blot analysis of TCF3 in Human b...



Immunohistochemistry of TCF3 in rat live...



Immunofluorescence of TCF3 in rat brain ...