
Product Datasheet

TARDBP Antibody (orb1238827)

Description

TARDBP Antibody

Species/Host

Rabbit

Reactivity

Human, Mouse, Rat

Conjugation

Unconjugated

Tested

ELISA, ICC, IF, WB

Applications
Immunogen

TDP43 antibody was raised against a 18 amino acid synthetic peptide from near the center of human TDP43. The immunogen is located within amino acids 160 - 210 of TDP43.

Target

TARDBP

Preservatives

TDP43 Antibody is supplied in PBS containing 0.02% sodium azide.

Form/Appearance

Liquid

Concentration

1 mg/mL

Storage

TDP43 antibody can be stored at 4°C for three months and -20°C, stable for up to one year. As with all antibodies care should be taken to avoid repeated freeze thaw cycles. Antibodies should not be exposed to prolonged high temperatures.

Note

For research use only

Application notes

TDP43 antibody can be used for detection of TDP43 by Western blot at 0.5 - 1 µg/mL. Antibody can also be used for immunocytochemistry starting at 5 µg/mL. For immunofluorescence start at 20 µg/mL. Antibody validated: Western Blot in mouse samples; Immunocytochemistry in human samples and Immunofluorescence in human samples. All other applications and species not yet tested.

Isotype

IgG

Clonality

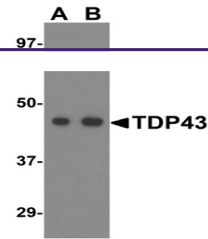
Polyclonal

MW

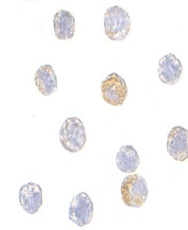
Predicted: 46 kDa Observed: 46 kDa

Uniprot ID
[Q13148](#)
NCBI
[ABO32290](#)
Dilution Range

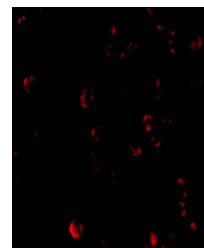
TDP43 antibody can be used for detection of TDP43 by Western blot at 0.5 - 1 µg/mL. Antibody can also be used for immunocytochemistry starting at 5 µg/mL. For immunofluorescence start at 20 µg/mL. Antibody validated: Western Blot in mouse samples;



Western blot analysis of TDP43 in L1210 ...



Immunocytochemistry of TDP43 in HeLa cell...



Immunofluorescence of TDP43 in HeLa cell...