
Product Datasheet

ARHGEF17 Antibody (orb1238822)

Description

ARHGEF17 Antibody

Species/Host

Rabbit

Reactivity

Human

Conjugation

Unconjugated

Tested

ELISA, IHC-P, WB

Applications
Immunogen

TEM4 antibody was raised against a 18 amino acid synthetic peptide near the center of human TEM4. The immunogen is located within amino acids 910 - 960 of TEM4.

Target

ARHGEF17

Preservatives

TEM4 Antibody is supplied in PBS containing 0.02% sodium azide.

Form/Appearance

Liquid

Concentration

1 mg/mL

Storage

TEM4 antibody can be stored at 4°C for three months and -20°C, stable for up to one year. As with all antibodies care should be taken to avoid repeated freeze thaw cycles. Antibodies should not be exposed to prolonged high temperatures.

Note

For research use only

Application notes

TEM4 antibody can be used for detection of TEM4 by Western blot at 0.5 - 1 µg/mL. Antibody can also be used for immunohistochemistry starting at 2.5 µg/mL. For immunofluorescence start at 20 µg/mL. Antibody validated: Western Blot in human samples and Immunohistochemistry in human samples. All other applications and species not yet tested.

Isotype

IgG

Clonality

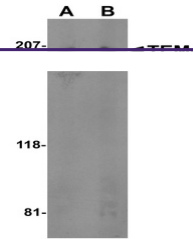
Polyclonal

MW

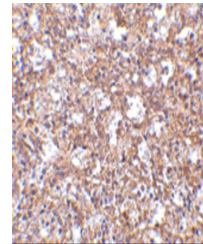
Predicted: 220 kDa Observed: 200 kDa

Uniprot ID
[Q96PE2](#)
NCBI
[Q96PE2](#)
Dilution Range

TEM4 antibody can be used for detection of TEM4 by Western blot at 0.5 - 1 µg/mL. Antibody can also be used for immunohistochemistry starting at 2.5 µg/mL. For immunofluorescence start at 20 µg/mL. Antibody validated: Western Blot in human



Western blot analysis of TEM4 in Jurkat ...



Immunohistochemistry of TEM4 in human sp...