
Product Datasheet

GPR124 Antibody (orb1238820)

Description

GPR124 Antibody

Species/Host

Rabbit

Reactivity

Human, Rat

Conjugation

Unconjugated

Tested Applications

ELISA, IF, IHC-P, WB

Immunogen

TEM5 antibody was raised against a 14 amino acid synthetic peptide near the center of human TEM5. The immunogen is located within amino acids 560 - 610 of TEM5.

Target

GPR124

Preservatives

TEM5 Antibody is supplied in PBS containing 0.02% sodium azide.

Form/Appearance

Liquid

Concentration

1 mg/mL

Storage

TEM5 antibody can be stored at 4°C for three months and -20°C, stable for up to one year. As with all antibodies care should be taken to avoid repeated freeze thaw cycles. Antibodies should not be exposed to prolonged high temperatures.

Note

For research use only

Application notes

TEM5 antibody can be used for detection of TEM5 by Western blot at 2 and 4 µg/mL. Antibody can also be used for immunohistochemistry starting at 5 µg/mL. For immunofluorescence start at 20 µg/mL. Antibody validated: Western Blot in rat samples; Immunohistochemistry in human samples and Immunofluorescence in human samples. All other applications and species not yet tested.

Isotype

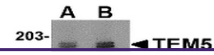
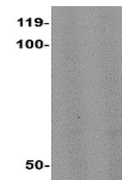
IgG

Clonality

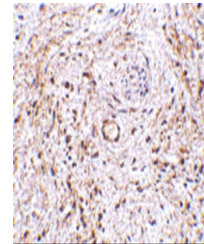
Polyclonal

Uniprot ID
[Q96PE1](#)
NCBI
[Q96PE1](#)
Dilution Range

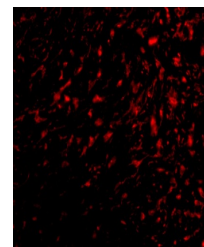
TEM5 antibody can be used for detection of TEM5 by Western blot at 2 and 4 µg/mL. Antibody can also be used for immunohistochemistry starting at 5 µg/mL. For immunofluorescence start at 20 µg/mL. Antibody validated: Western Blot in rat samples; Immunohistochemistry in human samples and

Western blot analysis of TEM5 in rat kid...



Immunohistochemistry of TEM5 in human bl...



Immunofluorescence of TEM5 in human blad...