
Product Datasheet

PLXDC1 Antibody (orb1238819)

Description

PLXDC1 Antibody

Species/Host

Rabbit

Reactivity

Human, Mouse, Rat

Conjugation

Unconjugated

Tested

ELISA, IF, IHC-P, WB

Applications
Immunogen

TEM7 antibody was raised against a 16 amino acid synthetic peptide from near the carboxy terminus of human TEM7. The immunogen is located within the last 50 amino acids of TEM7.

Target

PLXDC1

Preservatives

TEM7 Antibody is supplied in PBS containing 0.02% sodium azide.

Form/Appearance

Liquid

Concentration

1 mg/mL

Storage

TEM7 antibody can be stored at 4°C for three months and -20°C, stable for up to one year. As with all antibodies care should be taken to avoid repeated freeze thaw cycles. Antibodies should not be exposed to prolonged high temperatures.

Note

For research use only

Application notes

TEM7 antibody can be used for detection of TEM7 by Western blot at 0.5 - 2 µg/mL. Antibody can also be used for immunohistochemistry starting at 2.5 µg/mL. For immunofluorescence start at 20 µg/mL. Antibody validated: Western Blot in human samples; Immunohistochemistry in mouse samples and Immunofluorescence in mouse samples. All other applications and species not yet tested.

Isotype

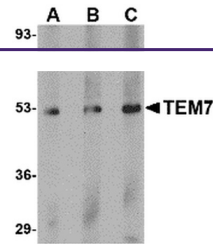
IgG

Clonality

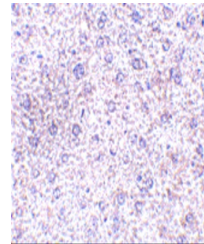
Polyclonal

Uniprot ID
[Q8IUUK5](#)
NCBI
[AAG00869](#)
Dilution Range

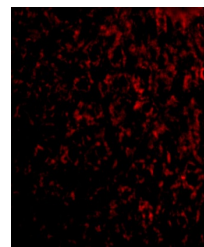
TEM7 antibody can be used for detection of TEM7 by Western blot at 0.5 - 2 µg/mL. Antibody can also be used for immunohistochemistry starting at 2.5 µg/mL. For immunofluorescence start at 20 µg/mL. Antibody validated: Western Blot in human samples; Immunohistochemistry in mouse samples



Western blot analysis of TEM7 in human I...



Immunohistochemistry of TEM7 in mouse li...



Immunofluorescence of TEM7 in mouse live...